



LA6951

## &Tradition Mass Light NA5 Pendant

SOURCE: <https://www.davidvillagelighting.co.uk/product/Tradition-Mass-Light-NA5-Pendant/14008>

### PRODUCT DESCRIPTION

**Designer:** Norm Architects

### Mass Light NA5 Pendant Light by &Tradition

The Mass Light pendant was designed by the two founders of Norm Architects, Kasper Rønn Von Lotzbeck and Jonas Bjerre-Poulsen. Inspired by the old street lamps seen in cities such as Barcelona, Paris and New York, these lamps are distinguished by a cast iron top and a translucent glass sphere. The designers then took this aesthetic to produce the [&Tradition Mass Light collection](#).

Characterised by its opal glass sphere, with the combination of copper, the Mass Light pendant light is a chic, simplistic pendant that is entrenched in historic design principles. The use of quality materials make this pendant both durable and stylish, being a lovely addition to your space. This pendant can be used in a variety of settings and is used best when in a series or cluster of lights thanks to its warm, soft glow. Mix and match different material finishes to create real variety in your lighting scheme. For an even bigger impact in this design, look at the [&Tradition Mass Light Chandelier](#).FB

**Please Note:** The Mass Light NA5 Pendant is supplied without a ceiling canopy.

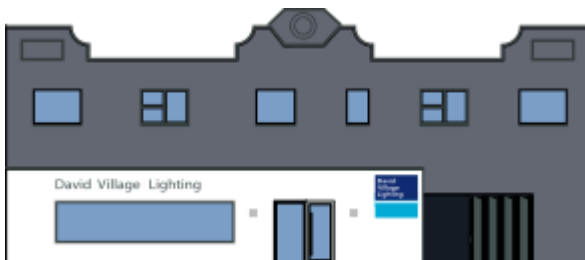
### PRODUCT SPECIFICATION

**Light Source:** 1 x Max 40W G9 (excluded)

**IP Code:** 20

**Dimming:** Dimmable via mains phase dimming.

**Dimensions:** Ø12.6cm  
Height: 18.3cm  
Cable Length: 4m



**For all sales and technical enquiries, please contact:**

+44 (0)114 263 4266

[info@davidvillagelighting.co.uk](mailto:info@davidvillagelighting.co.uk)

[www.davidvillagelighting.co.uk](http://www.davidvillagelighting.co.uk)