

**marset**

## Marset Scotch Club Wall Lights

LA6831

SOURCE: <https://www.davidvillagelighting.co.uk/product/Marset-Scotch-Club-Wall-Lights/13855>

### PRODUCT DESCRIPTION

**Designer:** Xavier Manosa

### Marset Scotch Club Wall light

Inspired by the revolving disco ball, Scotch Club was created with similar internal faces reflecting light in all directions, boasting its unique shape. The traditional process of ceramic production is meticulous and painstaking, fired in the kiln four times and coated with specially made glazes for this collection only.

Designed by Xavier Mañosa and master ceramicist Mashallah, their Scotch Club wall light features a multifaceted shade with an enamel interior in a white or gold finish. Available in six colourways to choose from.

Scotch Club Wall Light is perfect to feature in multiples for a dramatic effect, the variety of colours are ensured to suit a variety of interior designs. The unique and engaging form lends itself to hallways, kitchens & dining rooms, providing a good amount of direct light.

Marset Scotch Club collection also features a pendant light and ceiling flush light.



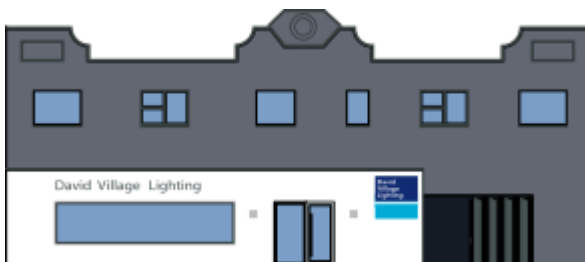
### PRODUCT SPECIFICATION

**Light Source:** 2 x max 2.2W G9 LED (excluded)

**IP Code:** 20

**Dimming:** Dimmable via mains phase dimming

**Dimensions:** Ø30cm shade  
9.9cm depth  
Ø14.7cm wall mount



**For all sales and technical enquiries, please contact:**

+44 (0)114 263 4266

[info@davidvillagelighting.co.uk](mailto:info@davidvillagelighting.co.uk)

[www.davidvillagelighting.co.uk](http://www.davidvillagelighting.co.uk)