

a-emotional light

LA6777

a-emotional light Coral Reef Pendant

SOURCE: <https://www.davidvillagelighting.co.uk/product/a-emotional-light-Coral-Reef-Pendant/13749>



PRODUCT DESCRIPTION

Designer: Arturo Alvarez

a-emotional light Coral Reef

The Coral Reef pendant by a-emotional light is an organic-looking light inspired by the beauty of the coral reef. Designed by Altruro Alvarez, who is known for drawing inspiration from the natural world, The Coral Reef evokes the marine world and the organisms within it whilst being durable and easily maintained. This is achieved by manufacturing each pendant using SIMITECH®, a silicone and steel mesh that Alvarez created. SIMITECH® allows steel to become malleable so it can be folded, molded, and cut resulting in creative freedom in design.

The Coral Reef fits into a variety of settings, both domestic and commercial, and can be hung individually or in multiples with other pendants from [The Coral Collection](#). The shade creates a soft glow to add ambient lighting to any space, and the downward lighting makes The Coral Reef ideal above surfaces such as a kitchen island or dining room table.

Also available in beige, grey, and taupe or as an LED version. Please [contact us](#) for further information.

PRODUCT SPECIFICATION

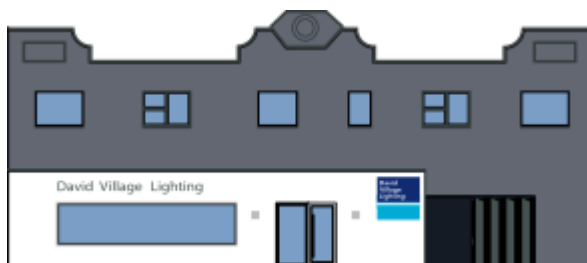
Light Source: 1 x Max 12W E27 LED (excluded)

IP Code: 20

Dimming: Dimmable via mains phase dimming.

Dimensions: Ø20cm
Height: 60cm
Cord Length: 150cm
Ceiling Rose: Ø8cm





For all sales and technical enquiries, please contact:

+44 (0)114 263 4266

info@davidvillagelighting.co.uk

www.davidvillagelighting.co.uk