

Artemide

Artemide Two Flags LED Wall Light

LA6677

SOURCE: <https://www.davidvillagelighting.co.uk/product/Artemide-Two-Flags-LED-Wall-Light/13585>

PRODUCT DESCRIPTION

Designer: Ernesto Gismondi

Artemide Two Flags LED Wall Light

The Artemide Two Flags Wall Light was designed by Ernesto Gismondi and is crafted from painted aluminium and borosilicate glass, which directs light onto the wall above and below it. With an integrated LED light source, this wall lamp can be tilted to direct the light emission as required, further adding to its functionality. So, although the fitting is non-dimmable, it means you can still dictate how direct the illumination is.

Two Flags is an elegant addition to hallways, kitchens, dining areas and even living rooms. It can also be utilised in commercial areas, such as in hotels, restaurants, bars, galleries and cafes. The monochromatic colour palette offers Two Flags in either a sleek black or white finish, both of which can adapt beautifully to modern interiors.



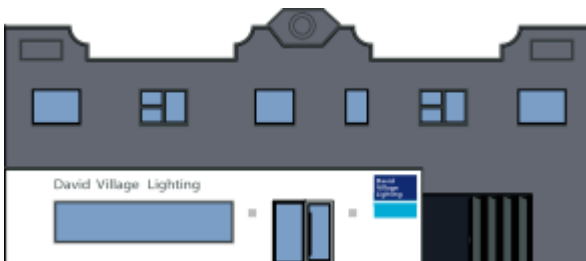
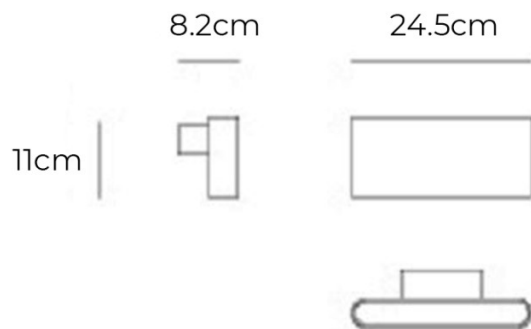
PRODUCT SPECIFICATION

Light Source: 21W, 3000K, 1131 Lumens

IP Code: 20

Dimming: Non-Dimmable.

Dimensions: Width: 24.5cm
Depth: 8.2cm
Height: 11cm



For all sales and technical enquiries, please contact:

+44 (0)114 263 4266

info@davidvillagelighting.co.uk

www.davidvillagelighting.co.uk