

Artemide

## Artemide Nur LED Pendant Light

LA6540

SOURCE: <https://www.davidvillagelighting.co.uk/product/Artemide-Nur-LED-Pendant-Light/13406>



### PRODUCT DESCRIPTION

**Designer:** Ernesto Gismondi

### Artemide Nur LED Pendant Light

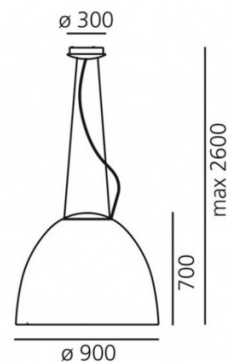
The Nur lights were designed to host LED technology, making them eco-friendly and energy efficient. The design belongs to the founder of the Artemide Group, Ernesto Gismondi. A minimal design yet its bare size and dome shape complements any space, whether residential or commercial. Nur pendants add the bit of personality you need into any room, emitting a soft and subtle light.

The Nur LED Pendant is available in two sizes, the large Nur 1618 and the Nur Mini. Nur 1618 comes in aluminium grey and anthracite grey, while Nur Mini is also available in a glossy white or black finish. Explore the [Nur Collection](#) which also includes a ceiling light, while each application is available with a retrofit light source.

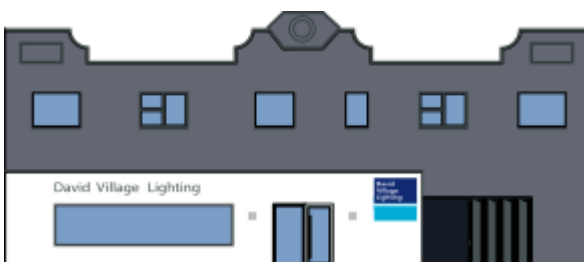
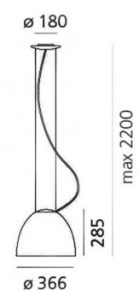
### PRODUCT SPECIFICATION

- Light** Nur 1618 - 80W, 3000K, 4308 lumens  
**Source:** Mini Nur - 30W, 2700K, 1287 lumens  
**Dimming:** Dimmable with Push to make/switch dimming, dimmable using push to make switches. Please consult your electrician, additional wiring may be required on site.  
**Dimensions:** Nur 1618 - Ø90cm, 70cm H, 260cm cable  
 Mini Nur - Ø36cm, 28.5cm H, 200cm cable

Nur 1618



Mini Nur



**For all sales and technical enquiries, please contact:**

+44 (0)114 263 4266

[info@davidvillagelighting.co.uk](mailto:info@davidvillagelighting.co.uk)

[www.davidvillagelighting.co.uk](http://www.davidvillagelighting.co.uk)