

Artemide Rea LED Wall Light

LA6531

SOURCE: <https://www.davidvillagelighting.co.uk/product/Artemide-Rea-LED-Wall-Light/13398>

PRODUCT DESCRIPTION

Designer: Neil Poulton

Artemide Rea LED Wall Light

The Rea Wall Light was designed by Neil Poulton, who described the lighting solution as a splitting amoeba. A true Trekkie, Poulton was inspired by the Starship Enterprise from the 1960s TV series Star Trek. A small and minimalist design, the Artemide Rea LED Wall Light casts its illumination upwards and onto the wall, creating a captivating indirect glow that is perfect for hallways, kitchens, dining areas and even bedrooms.

Available in two sizes, Rea 12 and Rea 17, this wall light boasts a minimalistic silhouette and a sleek white finish. One disk houses the integrated LED source while the perpendicular disk functions as a wall support. The two disks are at a 90-degree angle but harmoniously blend into each other. Rea is suitable for both residential and commercial projects, and will match with any interior design.



PRODUCT SPECIFICATION

Light Source: Rea 12: 8W, 3000K, 731 Lumens
 Rea 17: 20W, 3000K, 1826 Lumens

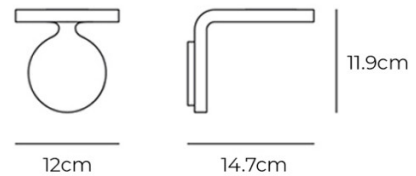
IP Code: 20

Dimming: Non-Dimmable.

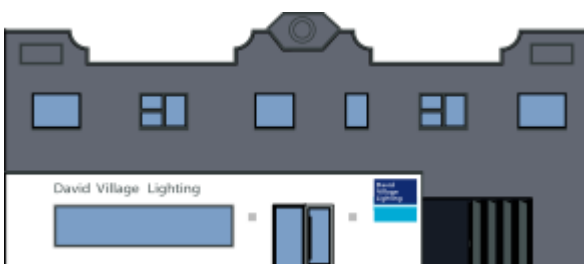
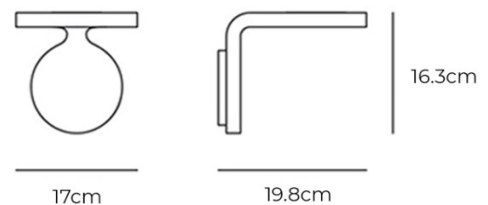
Dimensions: Rea 12:
 Width: 12cm
 Depth: 14.7cm
 Height: 11.9cm

Rea 17:
 Width: 17cm
 Depth: 19.8cm
 Height: 16.3cm

Rea 12:



Rea 17:



For all sales and technical enquiries, please contact:

+44 (0)114 263 4266

info@davidvillagelighting.co.uk

www.davidvillagelighting.co.uk