

kdln

LA6491/B

KDLN Peacock LED Suspension Light

SOURCE: <https://www.davidvillagelighting.co.uk/product/KDLN-Peacock-LED-Suspension-Light/13355>



PRODUCT DESCRIPTION

Designer: Noé Duchaufour-Lawrance

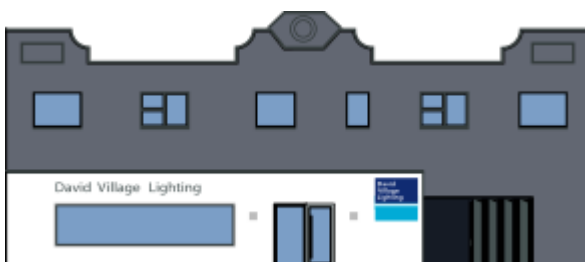
KDLN Peacock LED Suspension Light

Inspired by the meticulous and precise logic of nature, the Peacock suspension light by KDLN was a design based on the feathers of a peacock. This contemporary chandelier features multiple LED light sources that provide 360 degree, glare-free light. This stunning KDLN suspension is a great centerpiece for your dining or living area.

The Peacock suspension is beautifully dimmable and can be easily adjusted to the perfect lumen output for the ideal ambiance. This chandelier features an elegant brass finish that gives the KDLN lamp a luxurious aesthetic. This chandelier suspension light by KDLN is Ø80cm which gives it a decadent and impressive quality. Meanwhile, the steel material used as the main body of the lamp gives the Peacock suspension an industrial aesthetic that is handcrafted into thin feather-like modules. This industrial yet luxurious design takes this suspension light into the 21st-century style in which high-quality rustic materials are making a comeback.

PRODUCT SPECIFICATION

Light Source:	4.5W, 2700K, 6000 Lumens
IP Code:	20
Dimming:	Dimmable via 1-10v dimming systems. Please consult your electrician, additional wiring may be required on site.
Dimensions:	Ø80cm Shade Height: 52.7cm Ceiling Canopy: Ø20cm Cable Length: 180cm



For all sales and technical enquiries, please contact:

+44 (0)114 263 4266

info@davidvillagelighting.co.uk

www.davidvillagelighting.co.uk