

marset

Marset Maranga Pendant Light

LA6282

SOURCE: <https://www.davidvillagelighting.co.uk/product/Marset-Maranga-Pendant-Light/13151>



PRODUCT DESCRIPTION

Designer: Christophe Mathieu

Marset Maranga Pendant

Maranga pendant light is designed by Christophe Mathieu, the unique shade is made up of 32 polycarbonate sections, which fit together to allow chinks of light to escape and create beautiful lighting effects. This interplay of light and dark generates an effect that is rich in shades of light and prevents glare, while an opening at the bottom fitted with a diffuser gives out direct light downwards.

Marset Maranga pendant is perfect for living rooms and dining areas, perfectly diffused to set the atmosphere, but bright enough to allow effortless day-to-day living. Because of the engaging play of light and shadows, this unique design makes itself a feature within any contemporary space.

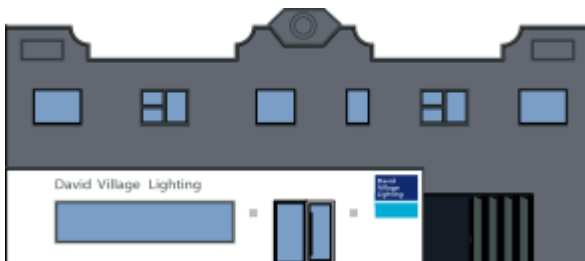
PRODUCT SPECIFICATION

Light Source: 3 x max 8W E27 LED (excluded)

IP Code: 20

Dimming: Dimmable via mains phase dimming

Dimensions: Ø50cm
16cm shade height
Ø11cm ceiling canopy
200cm cable length



For all sales and technical enquiries, please contact:

+44 (0)114 263 4266

info@davidvillagelighting.co.uk

www.davidvillagelighting.co.uk