

Artemide

LA6266

## Artemide Tatsuno-Otoshigo LED Suspension

SOURCE: <https://www.davidvillagelighting.co.uk/product/Artemide-Tatsuno-Otoshigo-LED-Suspension/13115>

### PRODUCT DESCRIPTION

**Designer:** Issey Miyake + Reality Lab

### Tatsuno-Otoshigo Suspension by Artemide

The Miyake Design Studio focused on the art of lighting, when back in 2010 the team created the 132.5 ISSEY MIYAKE. Miyake and his research team, Reality Lab, created a nonwoven fabric as a new way of making clothing. The material is made of recycled fibres from PET bottles has unique features. Once formed, the material is wrinkled to add strength and a distinctive look. The process itself was developed using 3D principals fed into a mathematical program.

Miyake and his team collaborated and co-developed the IN-EI Issey Miyake collection with Italian lighting brand, Artemide. Artemide brought in her lighting expertise and technological know how. The result were a collection of lights, with a shade made with two or three dimensional principles, creating an alteration between light and shadows. The shade unfolds into a spiral form, giving it an almost sculptural shape and has no need for an internal structure.

The team was inspired by the book of Junichiro Tanizaki, "In'ei Reisan" which translate to "In Praise of Shadows". The author elaborated how different depths and shadows patterns would create nuances of light. It was that quality that Issey and his team wanted to bring in modern spaces.

Besides the Tatsuno-Otoshigo suspension, the IN-EI Issey Miyake collection also includes the Minomushi [floor lamp](#) and [suspension](#) light and the [Mendori table lamp](#).



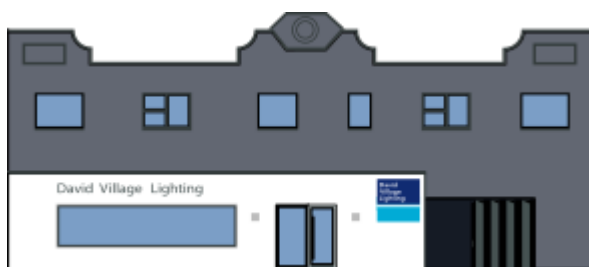
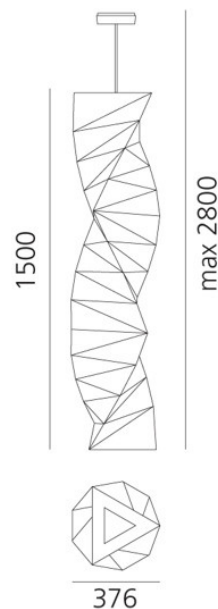
## PRODUCT SPECIFICATION

**Light Source:** 28W, 3000K, 2119 lumens

**IP Code:** 20

**Dimming:** Dimmable via Push to make/switch dimming.  
Please consult your electrician, additional wiring may be required on site.

**Dimensions:** 280 height  
37.6 cm width  
37.6 cm depth



**For all sales and technical enquiries, please contact:**

+44 (0)114 263 4266

[info@davidvillagelighting.co.uk](mailto:info@davidvillagelighting.co.uk)

[www.davidvillagelighting.co.uk](http://www.davidvillagelighting.co.uk)