

FRITZ HANSEN

Fritz Hansen Mingus Pendant

LA9538

SOURCE: <https://www.davidvillagelighting.co.uk/product/Fritz-Hansen-Mingus-Pendant/13005>



PRODUCT DESCRIPTION

Designer: Cecilie Manz

Mingus Pendant Light by Fritz Hansen

The Mingus pendant was designed in 2011 by Cecilie Manz. Beautiful and stylish, this pendant light is constructed from four flat parts that work together to produce a domed shape with straight lines. The angular yet smooth lines make this light contemporary and natural looking. The shade has an acrylic top so light can emanate out of the top to create atmosphere and also directs the light downwards, making it good for hanging over tables and surfaces.

The Mingus pendant light is available in 2 sizes, the smaller P1 and the bigger P2, and is also available in 6 finishes that are subtle and chic. You can use this pendant in kitchens, bedrooms, lounges and many more settings and is suitable for both commercial and home interiors. You buy several of the same colour and size to put in a row or series, or buy many varieties to create a spectacular cluster.

PRODUCT SPECIFICATION

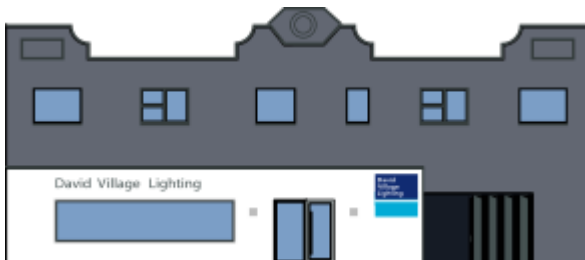
Light Source: P1 - 1 x E27 46W max (excluded)
P2 - 1 x E27 70W max (excluded)

IP Code: 20

Dimming: Dimmable via mains phase dimming

Dimensions: P1 - Ø22cm, H 21.3cm
P2 - Ø34cm, H 32cm

3m cable length



For all sales and technical enquiries, please contact:

+44 (0)114 263 4266

info@davidvillagelighting.co.uk

www.davidvillagelighting.co.uk