

innermost®

CL2901

## Innermost Facet 100 Chandelier Pendant Light

SOURCE: <https://www.davidvillagelighting.co.uk/product/Innermost-Facet-100-Chandelier-Pendant-Light/12526>

### PRODUCT DESCRIPTION

**Designer:** Tom Kirk

### Innermost Facet 100 Chandelier Pendant Light

The Innermost Facet 100 Chandelier, designed by Tom Kirk, is a luxurious lighting piece that captures attention with its faceted design and stunning reflective properties. This chandelier is crafted from polished brass or stainless steel, with multiple tiny facets arranged at different angles around its diameter, each one reflecting fragments of its surroundings. The resulting effect is a mesmerising display of light and reflections, evoking the elegance of glass or crystal without sacrificing the strength of metal.

Ideal for grand spaces, the Facet 100 Chandelier serves as a captivating focal point in dining rooms, entrance halls, or commercial venues. Weighing 29kg, this substantial piece arrives in a wooden crate with white gloves to ensure its finish remains flawless during installation. With its sophisticated allure and intricate detailing, the Facet 100 brings an element of luxury to any interior.

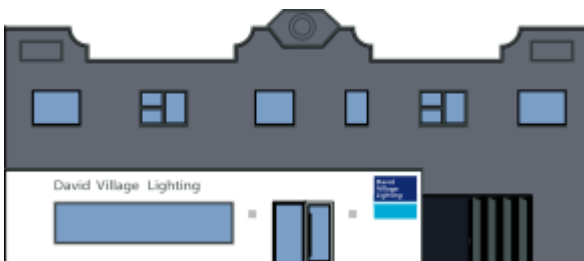
### PRODUCT SPECIFICATION

**Light Source:** 24x Max 25W G9 (excluded)

**IP Code:** 20

**Dimming:** Dimmable via mains phase dimming

**Dimensions:** Height: 32cm  
Diameter: 100cm  
Cable length: 4m



**For all sales and technical enquiries, please contact:**

+44 (0)114 263 4266

[info@davidvillagelighting.co.uk](mailto:info@davidvillagelighting.co.uk)

[www.davidvillagelighting.co.uk](http://www.davidvillagelighting.co.uk)