



## Tom Dixon Felt Pendant

LA9854

SOURCE: <https://www.davidvillagelighting.co.uk/product/Tom-Dixon-Felt-Pendant/11553>



### PRODUCT DESCRIPTION

#### Tom Dixon Felt Shade pendant light.

The Tom Dixon Felt is designed to add warmth and ambient to any social space such as living rooms, hallways or atriums. Felt light works perfectly as a cluster or linear installation, it's compact size allows for an engaging display.

This pendant shade that employs a technique known as fabric-forming, a process rarely used in lighting and furniture design. Felt is created by heat pressing a double layer of material which is then sculpted into shape. The shade has either a tactile grey exterior and white interior.

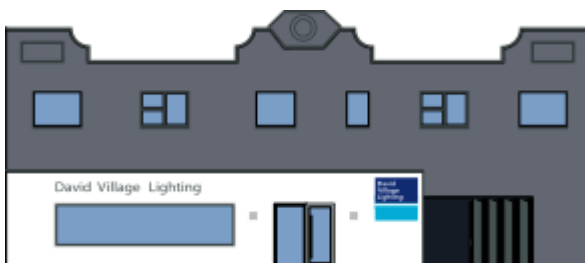
### PRODUCT SPECIFICATION

**Light Source:** max 42W E27 (excluded)

**IP Code:** 20

**Dimming:** Dimmable via mains phase dimming.

**Dimensions:** Cable Length: 250cm  
Shade height: 30cm  
Shade width: 40cm



**For all sales and technical enquiries, please contact:**

+44 (0)114 263 4266

[info@davidvillagelighting.co.uk](mailto:info@davidvillagelighting.co.uk)

[www.davidvillagelighting.co.uk](http://www.davidvillagelighting.co.uk)