



Tom Dixon Mirror Ball Pendant

LA9831

SOURCE: <https://www.davidvillagelighting.co.uk/product/Tom-Dixon-Mirror-Ball-Pendant/11444>



PRODUCT DESCRIPTION

Designer: Tom Dixon

Tom Dixon Mirror Ball Pendant light

Please note: This version of the Mirror Ball is being phased out and replaced by the [LED version](#).

A highly reflective shade inspired by the space helmet of 1960s astronauts. The Tom Dixon Mirror Ball is created by exploding a thin layer of pure metal onto the internal surface of a polycarbonate globe. One-third of the shade is transparent at the bottom to increase the distribution of light below, the metallic upper part of the globe prevents glare and adds a stylish edge. Tom Dixon's Mirror Ball has fast become one of the most iconic products in the collection.

Available in a gold colour finish, there is a wide range to choose from to create a bespoke installation for areas such as dining rooms, kitchens or hallways.

All sizes come complete with 250 cm clear cable.

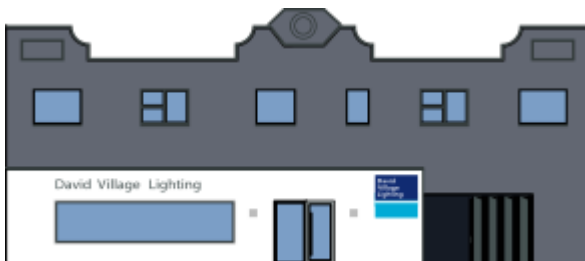
PRODUCT SPECIFICATION

Light Source: 25 - 1 x E14 25W max (excluded)

IP Code: 20

Dimming: Dimmable using leading edge and trailing edge

Dimensions: Ø25cm
25cm height
250cm cable length



For all sales and technical enquiries, please contact:

+44 (0)114 263 4266

info@davidvillagelighting.co.uk

www.davidvillagelighting.co.uk