



Luceplan Pétale LED Triangular Pendant

LA9814

SOURCE: <https://www.davidvillagelighting.co.uk/product/Luceplan-Ptale-LED-Triangular-Pendant/11205>



PRODUCT DESCRIPTION

Designer: Odile Decq

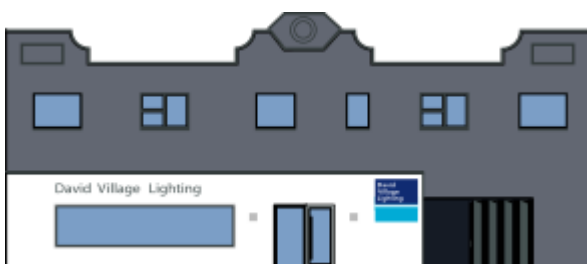
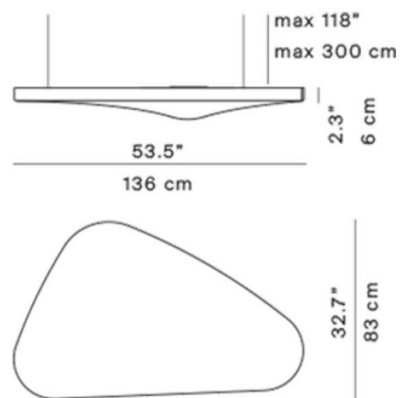
Luceplan Triangular Petale Pendant

The Luceplan Triangular Petale is a minimalistic pendant light with an organic form. The design was inspired by nature, specifically a floating petal - which was the inspiration for the name. This piece was designed by Odile Decq for Luceplan in 2011 and remains just as influential now as the day it were released.

The pendant light is made from a sound absorbent panel that is dressed in white fabric, improving the acoustics in your space. Sounds are completely absorbed with this design, making it great for public hospitality spaces or areas in your home where you often host or gather with friends. The Luceplan Triangular Petale is a non-dazzling luminaire that points directly downwards and is dimmable, meaning you can personalise your light intensity to fit your own needs, offering both a beautiful and functional light.

PRODUCT SPECIFICATION

- Light Source:** 17W, 3000K, 1232 Lumens + 45W, 2700K direct optic
- IP Code:** 20
- Dimming:** Dimmable via Dali dimming systems. Please consult your electrician, additional wiring may be required.
- Dimensions:** Max Drop: 300cm
Body: 136cm x 83cm
Depth: 6cm



For all sales and technical enquiries, please contact:

+44 (0)114 263 4266

info@davidvillagelighting.co.uk

www.davidvillagelighting.co.uk