



Zero Camouflage LED Pendant

LA9632

SOURCE: <https://www.davidvillagelighting.co.uk/product/Zero-Camouflage-LED-Pendant/11154>



PRODUCT DESCRIPTION

Designer: Front

Zero Camouflage LED Pendant

Designed by Front Design in 2007, the Zero Camouflage Pendant is a contemporary lighting fixture with a sculptural, industrial aesthetic. Made from laser-cut aluminium, the shade allows light to filter through its intricate design, creating dynamic shadows and a warm, diffused glow. Perfect for dining spaces, offices, and hospitality settings, the Camouflage pendant is an eye-catching addition to modern interiors.

Complete with a high-quality prismatic acrylic diffuser to soften the light output. Fitted with either a 12W integrated LED module (525LM, 3000K) or an E27 socket for a replaceable bulb, the pendant provides energy-efficient illumination. Suspended from a rod, which can be shortened during installation, it offers versatility in ceiling height adjustments.

PRODUCT SPECIFICATION

Light Source: 12W, 3000K, 525 Lumens

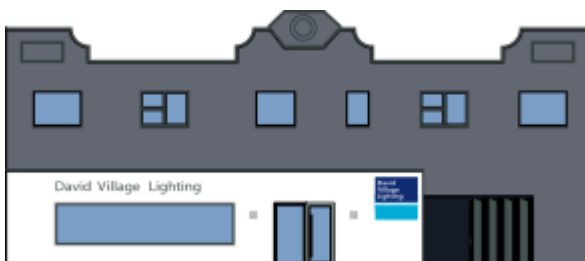
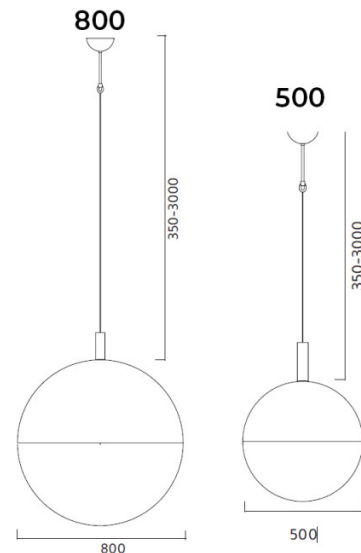
IP Code: 20

Dimming: Non-Dimmable.

Dimensions: **500mm:**
Shade: Ø50cm

800mm:
Shade: Ø80cm

Cable Length: 35-300cm



For all sales and technical enquiries, please contact:

+44 (0)114 263 4266

info@davidvillagelighting.co.uk

www.davidvillagelighting.co.uk