

**CLEARANCE
OFFERS**

LA9850/CLEAR

**Tom Dixon Etch Pendant
CLEARANCE**

SOURCE: <https://www.davidvillagelighting.co.uk/product/Tom-Dixon-Etch-Pendant-CLEARANCE/10002837>



PRODUCT DESCRIPTION

Designer: Tom Dixon

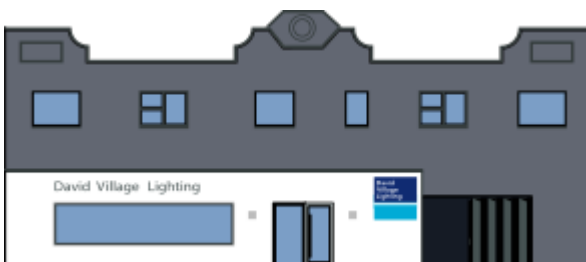
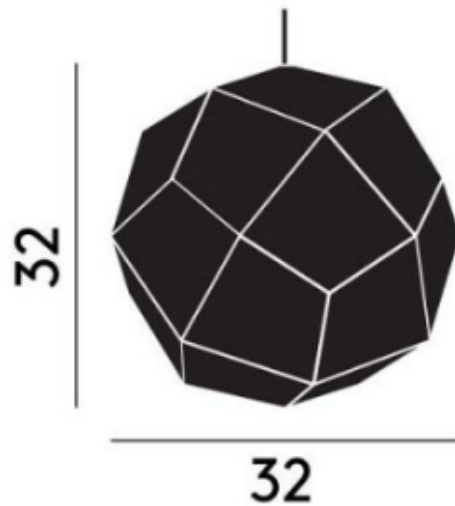
Tom Dixon Etch Pendant

DISCONTINUED AND EX-DISPLAY, BOXED IN A-GRADE NON-ORIGINAL PACKAGING. MINOR SIGNS OF WEAR AND TEAR. SEE IMAGES FOR EXACT CONDITION.
1 x Brass Available.

A geodesic design of refined taste, the Etch pendant was inspired by mathematics, while its design resembles the old Victorian tin toys. The thin metal surface is digitally acid-etched and lightly perforated to allow for light to escape, creating a tangled set of shadows. You can install the Etch Pendant in multiples to create your own cluster, or display it individually for more compact spaces.

PRODUCT SPECIFICATION

- Light Source:** 1 x Max 42W E27 (Excluded)
- IP Code:** 20
- Dimming:** Dimmable via mains phase dimming.
- Dimensions:** Width: 32cm
Height: 32cm
Cable Length: 250cm



For all sales and technical enquiries, please contact:

+44 (0)114 263 4266

info@davidvillagelighting.co.uk

www.davidvillagelighting.co.uk