

VIBIA

LA11466/S

## Vibia Nexum Square LED Pendant / Ceiling Light

SOURCE: <https://www.davidvillagelighting.co.uk/product/Vibia-Nexum-Square-LED-Pendant-Ceiling-Light/10002816>

### PRODUCT DESCRIPTION

Designer: Arik Levy

## Vibia Nexum Square LED Pendant / Ceiling Light

The Vibia Nexum Square LED Pendant / Ceiling Light uses a balanced geometric layout to define an area with clarity and visual calm. Designed by Arik Levy, the Square typology brings Nexum's black aluminium profiles into broader compositions, making it suitable for lounges, lobbies, meeting rooms, hospitality spaces and open interiors where light needs to mark a specific zone without overwhelming the room. The downlighting models can be installed as ceiling-mounted or suspended lights, while the suspended downlighting and uplighting models add a greater sense of brightness throughout the space.

Available in 120cm, 180cm and 270cm square formats, the Nexum Square LED Pendant / Ceiling Light offers a more expansive architectural presence than the Lineal and Rectangular versions. The integrated 3000K LED source provides warm, controlled illumination, with uplighting models helping to reduce contrast and create a more even ambient effect.

**Please note, 2700K, 3500K and 4000K options are available.**  
[Contact us](#) for pricing and information.



# PRODUCT SPECIFICATION

**Light Source:** 5140, 5142, 5144: 12 x 5W, 3000K, 3804 Lumens  
5170, 5172, 5174: 14 x 5W, 3000K, 4438 Lumens

**IP Code:** 20

**Dimming:** Multiple dimming options including on/off, DALI, Push, 1-10V or Casambi. Please consult your electrician, additional wiring may be required on site.

**Dimensions:** 5140:

Height: 6cm  
Length: 120cm  
Width: 120cm

**5142:**

Height: 6cm  
Length: 180cm  
Width: 180cm

**5144:**

Height: 6cm  
Length: 270cm  
Width: 270cm

**5170:**

Height: 10cm  
Length: 120cm  
Width: 120cm

**5172:**

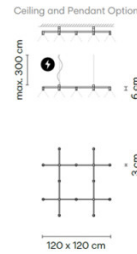
Height: 10cm  
Length: 180cm  
Width: 180cm

**5174:**

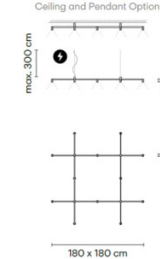
Height: 10cm  
Length: 270cm  
Width: 270cm

Cable Length: 300cm (max)

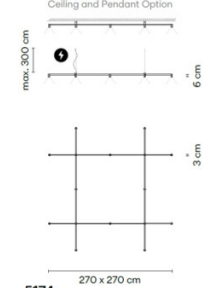
5140



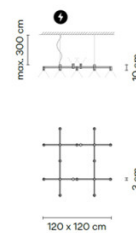
5142



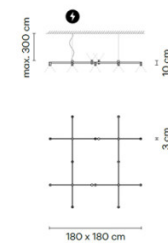
5144



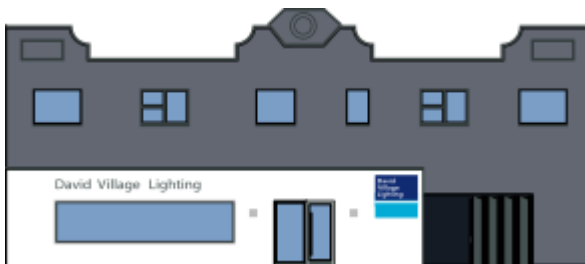
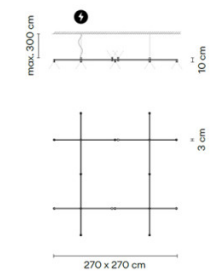
5170



5172



5174



**For all sales and technical enquiries, please contact:**

+44 (0)114 263 4266

[info@davidvillagelighting.co.uk](mailto:info@davidvillagelighting.co.uk)

[www.davidvillagelighting.co.uk](http://www.davidvillagelighting.co.uk)