

VIBIA

LA11466/R

Vibia Nexum Rectangular LED Pendant / Ceiling Light

SOURCE: <https://www.davidvillagelighting.co.uk/product/Vibia-Nexum-Rectangular-LED-Pendant-Ceiling-Light/10002815>

PRODUCT DESCRIPTION

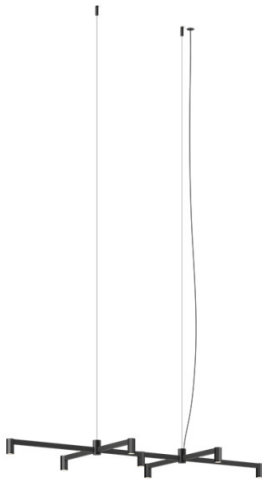
Designer: Arik Levy

Vibia Nexum Rectangular LED Pendant / Ceiling Light

The Vibia Nexum Rectangular LED Pendant / Ceiling Light structures illumination within a defined perimeter, making it well-suited to large tables, meeting rooms, reception areas and open workspaces. Designed by Arik Levy, the rectangular configuration uses black aluminium profiles and repeated LED points to create a clear architectural frame of light. The downlighting models can be installed as either ceiling-mounted or suspended versions, while the suspended downlighting and uplighting models add brightness to the ceiling plane.

Available in 120cm, 180cm and 270cm lengths, the Rectangular typology is designed for larger, clearly defined areas where even illumination and visual order are important. The integrated 3000K LED source provides warm architectural light for workplace, hospitality and residential interiors, with the uplighting versions helping to increase overall luminosity within the room. Additional spots may also be specified where required.

Please note, 2700K, 3500K and 4000K options are available.
[Contact us](#) for pricing and information.



PRODUCT SPECIFICATION

Light Source:
5130: 7 x 5W, 3000K, 2219 Lumens
5132: 10 x 5W, 3000K, 3170 Lumens
5134: 16 x 5W, 3000K, 5072 Lumens
5160: 8 x 5W, 3000K, 2536 Lumens
5162: 12 x 5W, 3000K, 3804 Lumens
5164: 18 x 5W, 3000K, 5706 Lumens

IP Code: 20

Dimming: Multiple dimming options including on/off, DALI, Push, 1-10V or Casambi. Please consult your electrician, additional wiring may be required on site.

Dimensions: 5130, 5160:
 Height: 10cm
 Length: 120cm
 Width: 60cm

5132:
 Height: 6cm
 Length: 180cm
 Width: 60cm

5134:
 Height: 6cm
 Length: 270cm
 Width: 60cm

5162:
 Height: 10cm
 Length: 180cm
 Width: 60cm

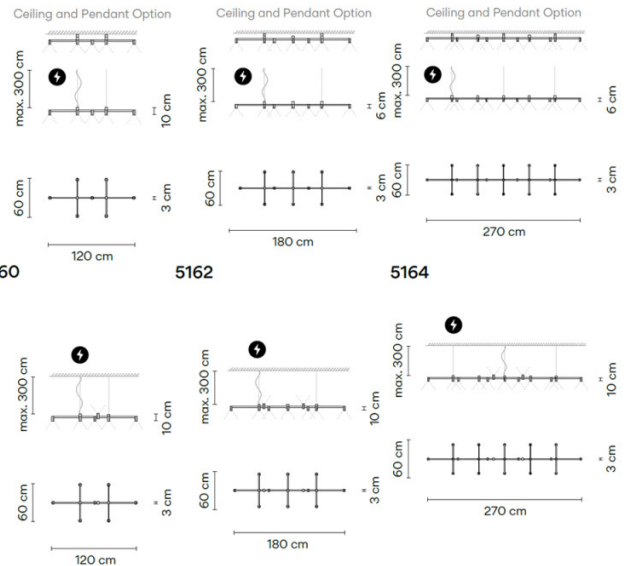
5164:
 Height: 10cm
 Length: 270cm
 Width: 60cm

Cable Length: Max 300cm

5130

5132

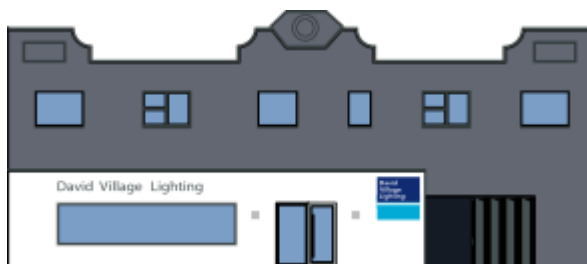
5134



5160

5162

5164



For all sales and technical enquiries, please contact:

+44 (0)114 263 4266

info@davidvillagelighting.co.uk

www.davidvillagelighting.co.uk