

CLEARANCE
OFFERS

LA11461/CLEAR

Woud Stone Pendant CLEARANCE

SOURCE: <https://www.davidvillagelighting.co.uk/product/Woud-Stone-Pendant-CLEARANCE/10002795>



PRODUCT DESCRIPTION

Designer: Philip Bro Ludvigsen

Woud Stone Pendant

BRAND NEW, OVERSTOCK. BOXED IN A-GRADE ORIGINAL PACKAGING.

1 x Brushed Metal Available.

The Woud Stone Pendant is characterised by its soft shapes and minimalistic expression. Inspired by the softness and shapes of beach stones, made during their life in water, sand and wind. The pendants are designed with the idea of stacking two round stones, which is one of the oldest human expressions.

The Stone pendant effortlessly projects a calming downlight onto the area below, perfect for above dining tables, kitchen counters and bedside tables. While the finish allows this luminaire to adapt to a variety of interior styles.

PRODUCT SPECIFICATION

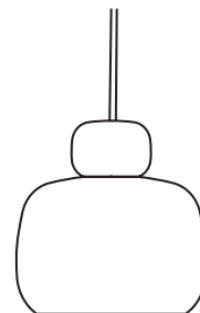
Light Source: 1 x Max 25W E14 (Excluded)

IP Code: 20

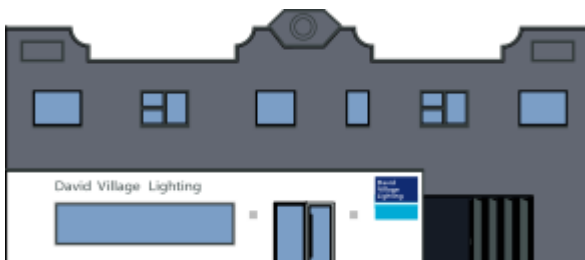
Dimming: Dimmable via mains phase dimming.

Dimensions: Shade: Ø15.9cm
Shade Height: 16cm
Cable Length: 300cm

159 mm
6.2 in



160 mm
6.2 in



For all sales and technical enquiries, please contact:

+44 (0)114 263 4266

info@davidvillagelighting.co.uk

www.davidvillagelighting.co.uk