

CLEARANCE  
OFFERS

LA10510/CLEAR

# Normann Copenhagen Porta Portable Lamp CLEARANCE EX- DISPLAY

SOURCE: <https://www.davidvillagelighting.co.uk/product/Normann-Copenhagen-Porta-Portable-Lamp-CLEARANCE-EX-DISPLAY/10002772>

## PRODUCT DESCRIPTION

**Designer:** Simon Legald

### Normann Copenhagen Porta Portable Lamp

**EX-DISPLAY, BOXED IN A-GRADE ORIGINAL PACKAGING. WEAR AND TEAR TO THE SHADE AND BODY. SEE IMAGES FOR EXACT CONDITION.**

**1 x Black Available.**

The Normann Copenhagen Porta Portable Lamp, as the name implies, is the first portable lamp in the brand's lighting collection. Porta utilises a streamlined and organic design, with its curves and cylindrical body. The dome-shaped shade was designed to create this warm, welcoming lighting aesthetic.

Adding to its ingenious design, the lamp is characterised by its mobility. Lightweight and portable, the lamp can be used in various spaces; the garden, offices or cafes. The Porta has become everyone's favourite reading companion. If you position the shade at 90°, it takes much less space and will perfectly fit in compact spaces, for easy storage.

With three dimming settings, you can set the light intensity to 40%, 70% or 100%, creating your desired atmosphere. Rechargeable, the lamp comes with a USB charging cable, and the battery can last from 8 to 90 hours (depending on light intensity). At the base, a small compartment area allows for the lamp to charge while in use. While a silicone base means the Porta lamp can stand securely.



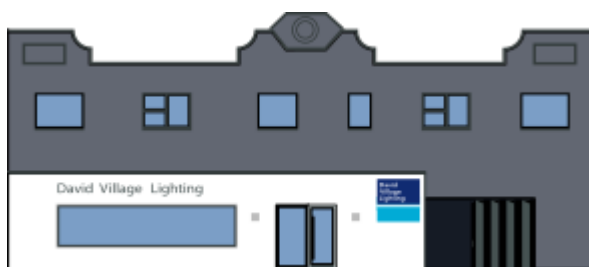
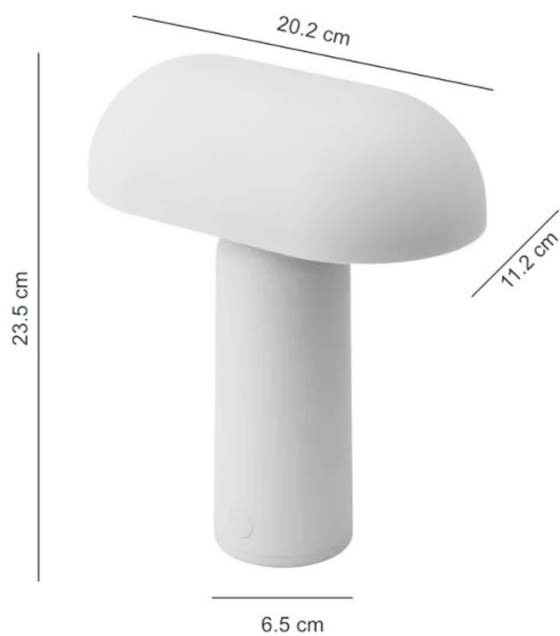
## PRODUCT SPECIFICATION

**Light Source:** 4W, 3000K, 51 Lumens

**IP Code:** 20

**Dimming:** Integrated dimmer on product.

**Dimensions:** Height: 23.5cm  
Width: 20.2cm  
Depth: 11.2cm  
Base: Ø6.5cm  
Charging Cable: 100cm



**For all sales and technical enquiries, please contact:**

+44 (0)114 263 4266

[info@davidvillagelighting.co.uk](mailto:info@davidvillagelighting.co.uk)

[www.davidvillagelighting.co.uk](http://www.davidvillagelighting.co.uk)