



Buster + Punch 4G Modular Toggle Switch

LA10430/4G/M

SOURCE: <https://www.davidvillagelighting.co.uk/product/Buster-Punch-4G-Modular-Toggle-Switch/10002759>

PRODUCT DESCRIPTION

Designer: Massimo Minale

Buster + Punch 4G Modular Toggle Switch

The Buster + Punch 4G Modular Toggle Switch was born from the brand's love for working with rare, solid metals. Crafted from solid metal and featuring Buster + Punch's signature linear or cross knurl pattern, the 4G Modular Toggle Switch adds a refined sense of sophistication to any interior. The solid metal plate and four toggle switches are finished in white, steel, bronzed brass, black, or brass for an ornate aesthetic which transforms an ordinary fitting into an extraordinary feature.

The 4G Modular Toggle Switch by Buster + Punch is part of their Custom Switches + Sockets collection. This allows you to choose the finish of each individual component. Please [contact us](#) for custom configurations and pricing.

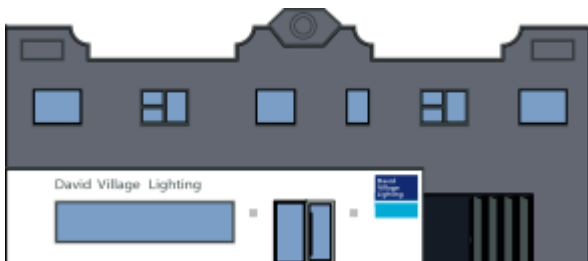
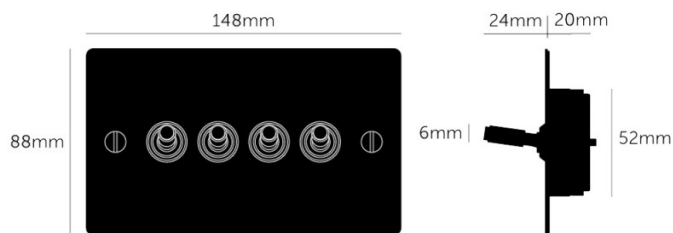


PRODUCT SPECIFICATION

Dimming: Triple Switch, 2-way, 10AX, 240V

Dimensions: Toggle: Ø6mm
 Height: 8.8cm
 Width: 14.8cm
 Depth: 2.4cm

Recommended Back Box:
 3G square back box - 47mm depth



For all sales and technical enquiries, please contact:

+44 (0)114 263 4266

info@davidvillagelighting.co.uk

www.davidvillagelighting.co.uk