

FLOS

# Flos Nocturne LED Floor Lamp

LA11452/F

SOURCE: <https://www.davidvillagelighting.co.uk/product/Flos-Nocturne-LED-Floor-Lamp/10002749>

## PRODUCT DESCRIPTION

**Designer:** Konstantin Grcic

### Flos Nocturne LED Floor Lamp

Flos Nocturne LED Floor Lamp is built around a structural, low-voltage electrified profile, with a flat metal base supporting a vertical extruded aluminium track. Designed by Konstantin Grcic, it belongs to the Nocturne series, an evolution of the Noctambule family that reprises blown glass and advanced LED technology while placing modularity at the centre of its lighting design.

The track is electrified at 48V on both sides, allowing light units to be inserted at any point along the upright. Cone versions use an extra-clear borosilicate glass diffuser in conical form with a focused optic for directional illumination, while the Bowl version uses a hemispherical glass diffuser for diffuse ceiling wash. The identity of Nocturne is defined by the visual contrast between the ethereal refinement of glass and the overtly industrial appearance of the track-mounted technical component.

Available in Black or Silver, the Flos Nocturne LED Floor Lamp can be specified as F1 Cone, F1 Bowl, or F2 Cone, with the F2 version using two Cone light units. The miniaturisation of every component accentuates the contrast between the handcrafted quality of the glass and the industrial expression of the upright. Best suited for living rooms, reading corners, bedrooms, and interior spaces where vertical modular lighting is needed with direct, diffused, or ambient light.



## PRODUCT SPECIFICATION

**Light Source:** **F1 Cone:** 15W, 2700K, 545 Lumens  
**F1 Bowl:** 15W, 2700K, 514 Lumens  
**F2 Cone:** 25W, 2700K, 1090 Lumens

**IP Code:** 20

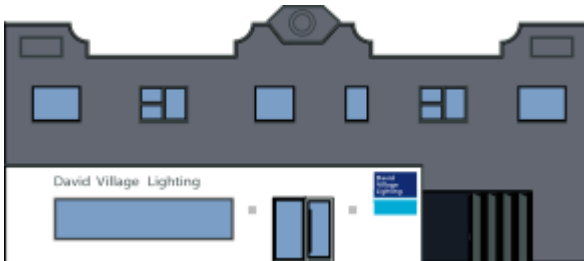
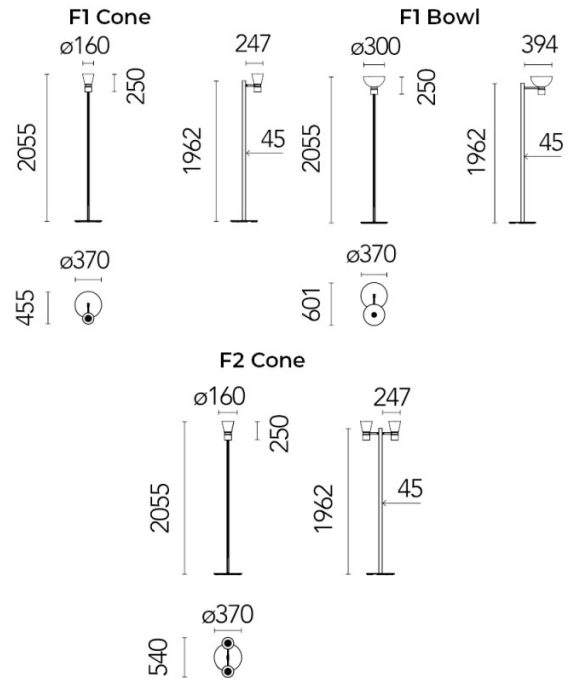
**Dimming:** Integrated dimmer on the product.

**Dimensions:** **F1 Cone:**  
Height: 205.5cm  
Base: Ø37cm  
Shade: Ø16cm

**F1 Bowl:**  
Height: 205.5cm  
Base: Ø37cm  
Shade: Ø30cm

**F2 Cone:**  
Height: 205.5cm  
Base: Ø37cm  
Shade: Ø16cm

Cable Length: 320cm



**For all sales and technical enquiries, please contact:**

+44 (0)114 263 4266

info@davidvillagelighting.co.uk

www.davidvillagelighting.co.uk