



# Buster + Punch 2G Modular Dimmer Switch

LA10429/2G/M

SOURCE: <https://www.davidvillagelighting.co.uk/product/Buster-Punch-2G-Modular-Dimmer-Switch/10002738>

## PRODUCT DESCRIPTION

Designer: Massimo Minale

### Buster + Punch 2G Modular Dimmer Switch

The 2G Modular Dimmer Switch is a stylish dimmer that boasts the industrial aesthetic synonymous with Buster + Punch. The solid metal plate features two rotary dimmer knobs with either linear or cross-knurled metal detailing. If required, components can be swapped, making this a truly future-proof system. Install throughout the home for solid metal tactility with Buster + Punch's signature analogue feel.

The 2G Modular Dimmer by Buster + Punch is part of their Custom Switches + Sockets collection. This allows you to choose the finish of each individual component. Please [contact us](#) for custom configurations and pricing.



## PRODUCT SPECIFICATION

**Dimming:** Double, 2 Gang 2-Way Dimmer.

Trailing Edge Dimmer Module (default), can be changed to Leading Edge mode on site.

**Dimensions:** Dimmer Knob: Ø1.7cm

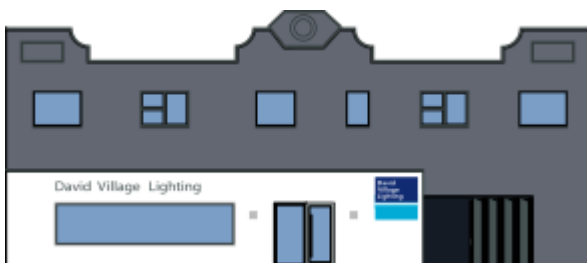
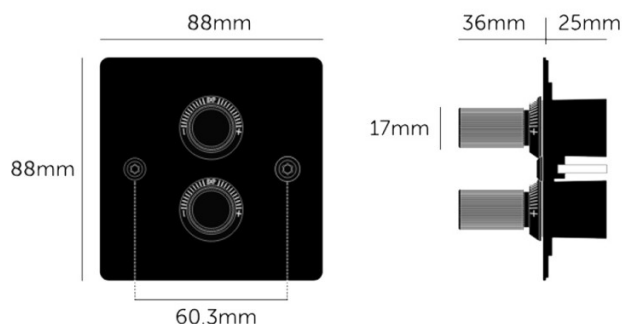
Height: 8.8cm

Width: 8.8cm

Depth: 3.6cm

**Recommended Back Box:**

2G square back box - 4.7cm depth



For all sales and technical enquiries, please contact:

+44 (0)114 263 4266

info@davidvillagelighting.co.uk

www.davidvillagelighting.co.uk