



# Buster + Punch 1G Modular Dimmer Switch

LA10429/1G/M

SOURCE: <https://www.davidvillagelighting.co.uk/product/Buster-Punch-1G-Modular-Dimmer-Switch/10002737>

## PRODUCT DESCRIPTION

Designer: Massimo Minale

### Buster + Punch 1G Modular Dimmer Switch

The 1G Modular Dimmer Switch boasts an industrial attitude that has become a signature of the Buster + Punch aesthetic. With unmistakable metal detailing, the modular system is a contemporary dimming solution that adds a sense of luxury to any space. The plate is crafted from solid metal and features a rotary dimmer knob with either linear or cross-knurled metal detailing. Display throughout the home for a sophisticated touch of solid-metal facility.

The 1G Modular Dimmer by Buster + Punch is part of their Custom Switches + Sockets collection. This allows you to choose the finish of each individual component. Please [contact us](#) for custom configurations and pricing.



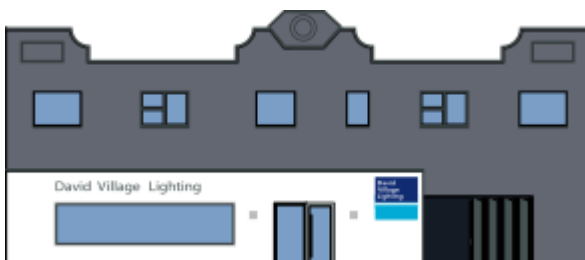
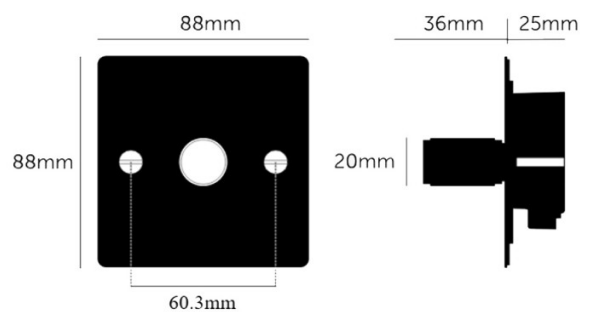
## PRODUCT SPECIFICATION

**Dimming:** Single, 1 Gang 2-Way Dimmer

Trailing Edge Dimmer Module (default), can be changed to Leading Edge mode on site.

**Dimensions:** Toggle: Ø2cm  
Height: 8.8cm  
Width: 8.8cm  
Depth: 3.6cm

**Recommended Back Box:**  
1G square back box - 4.7cm depth



For all sales and technical enquiries, please contact:

+44 (0)114 263 4266

[info@davidvillagelighting.co.uk](mailto:info@davidvillagelighting.co.uk)

[www.davidvillagelighting.co.uk](http://www.davidvillagelighting.co.uk)