

**CLEARANCE  
OFFERS**

**LA5946/CLEAR**

## Tom Dixon Spring Medium LED Pendant **CLEARANCE**

SOURCE: <https://www.davidvillagelighting.co.uk/product/Tom-Dixon-Spring-Medium-LED-Pendant-CLEARANCE/10002669>

### PRODUCT DESCRIPTION

**Designer:** Tom Dixon

### Tom Dixon Spring LED Pendant

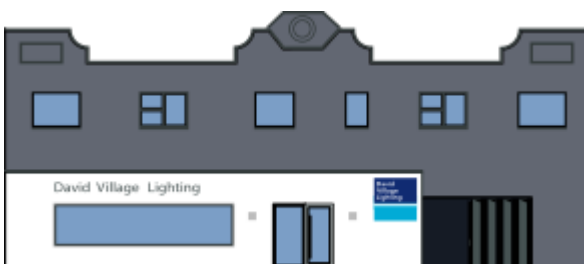
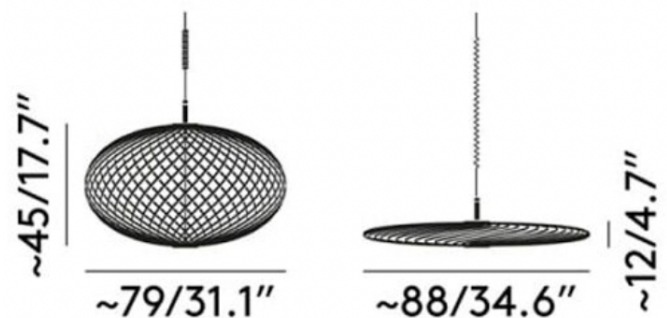
**BRAND NEW, IN GREAT CONDITION.  
BOXED IN B-GRADE ORIGINAL PACKAGING.  
1x Brass Available.**

The Spring Pendant by Tom Dixon is an elegant geometric design that is likened to a whisk and crafted from stainless steel ribbons that form around a central LED module. The abstract shade can be stretched out or flattened depending on your desired silhouette, and for this reason, many compare the style of the Tom Dixon Spring to a spirograph drawing, flying saucer or a pumpkin. The brass finish adds a sophisticated touch to the design and allows the lighting output to be warmed, generating an inviting illumination that produces unique light patterns due to the gaps in the shade. This luminaire can be dimmed, allowing you to personalise the ambience created in your interior, and makes a beautiful addition to dining spaces, whether installed individually or in clusters.

**The integrated LED module of the Tom Dixon Spring Pendant is fully serviceable, and a replacement module can be supplied. Please [contact us](#) for more information and pricing.**

### PRODUCT SPECIFICATION

**Light Source:** 6W, 3000K, 800 Lumens  
**IP Code:** 20  
**Dimming:** Dimmable using leading edge and trailing edge.  
**Dimensions:** Width: 79cm-88cm  
Height: 12cm-45cm  
Cable Length: 250cm



**For all sales and technical enquiries, please contact:**

+44 (0)114 263 4266

[info@davidvillagelighting.co.uk](mailto:info@davidvillagelighting.co.uk)

[www.davidvillagelighting.co.uk](http://www.davidvillagelighting.co.uk)