



Light Attack Infinity 800 Driver

LA-EUP30T

SOURCE: <https://www.davidvillagelighting.co.uk/product/Light-Attack-Infinity-800-Driver/10002589>



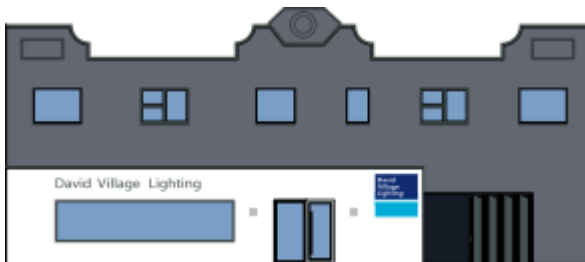
PRODUCT DESCRIPTION

UP30T-1HMC-0 is a constant output mode LED driver. The output current can be easily set via DIP switch. The driver supports leading edge (Triac) and trailing edge (ELV) dimmer, and can be compatible with the systems of various brands

PRODUCT SPECIFICATION

Dimming: Dimmable via mains phase dimming.

Dimensions: Length: 18.5cm
Width: 4.25cm
Height: 2.85cm



For all sales and technical enquiries, please contact:

+44 (0)114 263 4266

info@davidvillagelighting.co.uk

www.davidvillagelighting.co.uk