

ANOUR 

LA11311

ANOUR I-Model Cordless LED Suspension

SOURCE: <https://www.davidvillagelighting.co.uk/product/ANOUR-I-Model-Cordless-LED-Suspension/10002499>

PRODUCT DESCRIPTION

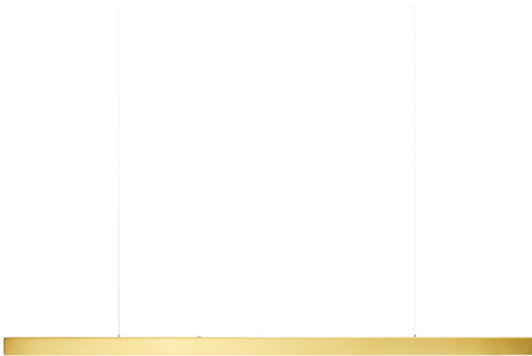
Designer: Arash Nourinejad

ANOUR I-Model Cordless LED Suspension Light

A true expression of refined craftsmanship and minimalist engineering, the ANOUR I-Model Cordless LED Suspension is a floating linear light designed to enhance contemporary interiors. Suspended on two fine tensioned wires that deliver low-voltage power, it creates a clean, uninterrupted line of warm, ambient light. Handmade in Denmark, each pendant showcases ANOUR's signature material expertise, with surface finishes ranging from brushed brass and polished copper to black stainless steel and rusted steel. Available in five standard lengths, 100cm, 150cm, 200cm, 250cm, and 300cm, the I-Model Cordless is ideal for installation over kitchen islands, dining tables, or long worktops.

This version of the I-Model includes an integrated touch dimmer built directly into the light body, allowing easy adjustment of the light level with the option of other dimming capabilities available on request. The powerful, glare-free integrated LED delivers high-quality illumination with a warm 2700K glow and a CRI of 93+, ensuring accurate and comfortable lighting. A visible driver installation is included as standard, while a hidden driver option is available for dropped ceilings. Custom lengths (in 5cm increments), temperatures, wire placements, and hidden driver installations are available on request. The I-Model Cordless blends discreet design with architectural presence, offering a distinctive lighting solution with a sculptural and sophisticated appeal.

The 150cm Browned Brass version of this product is available to view in our showroom.



PRODUCT SPECIFICATION

Light Source: **100cm & 150cm:** 30W, 2700K, 2130 Lumens
200cm: 40W, 2700K, 2840 Lumens
250cm: 50W, 2700K, 3550 Lumens
300cm: 60W, 2700K, 4260 Lumens

IP Code: 20

Dimming: Integrated dimmer on the product.

Dimensions: **100cm:**
Height: 5.3cm
Width: 3.5cm
Length: 100cm

150cm:
Height: 5.3cm
Width: 3.5cm
Length: 150cm

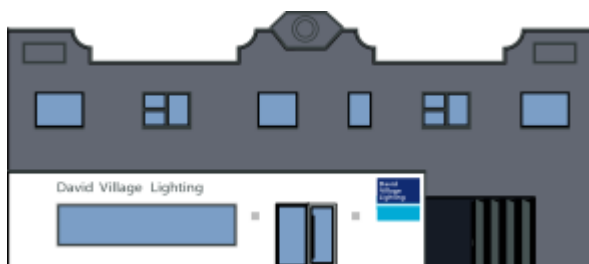
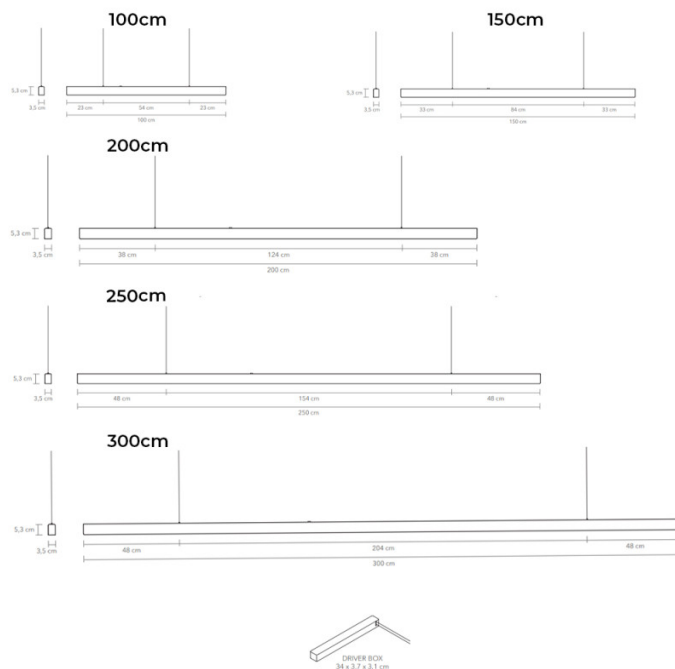
200cm:
Height: 5.3cm
Width: 3.5cm
Length: 200cm

250cm:
Height: 5.3cm
Width: 3.5cm
Length: 250cm

300cm:
Height: 5.3cm
Width: 3.5cm
Length: 200cm

Driver Box:
Height: 3.1cm
Width: 3.7cm
Length: 34cm

Drop Height: 800cm (Adjustable)



For all sales and technical enquiries, please contact:

+44 (0)114 263 4266

info@davidvillagelighting.co.uk

www.davidvillagelighting.co.uk