

BERT | FRANK

## Bert Frank Vima Table Lamp

LA11281/T

SOURCE: <https://www.davidvillagelighting.co.uk/product/Bert-Frank-Vima-Table-Lamp/10002440>

### PRODUCT DESCRIPTION

**Designer:** Robbie Llewellyn

### Bert Frank Vima Table Lamp

Compact in form yet striking in execution, the Bert Frank Vima Table Lamp is a sculptural accent piece designed to command quiet attention. With its symmetrical, double-sided alabaster façade and a central opal diffuser, the lamp emits a soft, ambient glow that plays across the surface of the stepped stone. Each face is framed by precision-machined brass, finished in brushed and bronzed tones to lend depth and contrast.

Crafted in Birmingham using traditional techniques, the Vima Table Lamp blends classical Art Deco influences with a distinctly modern silhouette. The curved alabaster reveals natural veining and translucency, while the matte glass diffuses light evenly for a warm, restful atmosphere. Beneath, a solid bronze base anchors the form and adds weight to the otherwise light-filled composition.

Ideal for use as a bedside lamp, desk accent or decorative centrepiece, the Vima Table Lamp offers both visual drama and refined craftsmanship, a standout within Bert Frank's evolving contemporary catalogue.

### PRODUCT SPECIFICATION

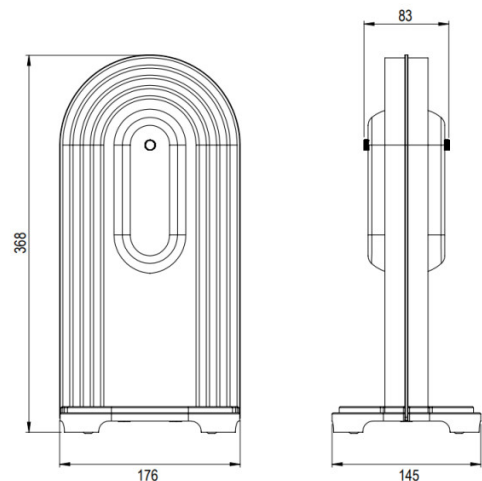
**Light Source:** 1 x Max 4W G9 LED (Included)

**IP Code:** 20

**Dimming:** In-line on/off switch included on cable.

**Dimensions:** Height: 36.8cm  
Width: 17.6cm  
Depth: 14.5cm

Cable Length: 200cm





**For all sales and technical enquiries, please contact:**

+44 (0)114 263 4266

[info@davidvillagelighting.co.uk](mailto:info@davidvillagelighting.co.uk)

[www.davidvillagelighting.co.uk](http://www.davidvillagelighting.co.uk)