



Established & Sons Mark Pendant

LA11263

SOURCE: <https://www.davidvillagelighting.co.uk/product/Established-Sons-Mark-Pendant/10002414>

PRODUCT DESCRIPTION

Designer: Martino Gamper

Established & Sons Mark Pendant

The Mark Pendant was designed by Martino Gamper, who originally created the pendant for the Marksman restaurant in East London. A mouth-blown glass shade is accented with vibrant colours. The shade is produced using traditional Murano Glass-blowing techniques. During the process, colourful glass rings are carefully applied by hand, adding a splash of colour to the design. The Mark Pendant is available in three playful colour combinations: Blue and Orange, Violet and Green, or Yellow and Pink. Coloured fabric, matching the colour of the bottom ring, covers the cable, maintaining the bright and vibrant theme of the pendant.

The opal, glass shade provides a diffused light that adds a warm ambience to the space around it. The wide shade directs light downward, creating bright and functional lighting, perfect for illuminating a surface. In the home, the Mark Pendant can be installed in a dining room to add a warm ambience to the room while illuminating the table below. In commercial settings, the Mark Pendant is a perfect lighting solution in the hospitality sector, such as in a commercial and vibrant restaurant. Install individually or as multiples to create an eye-catching display with a bold personality.



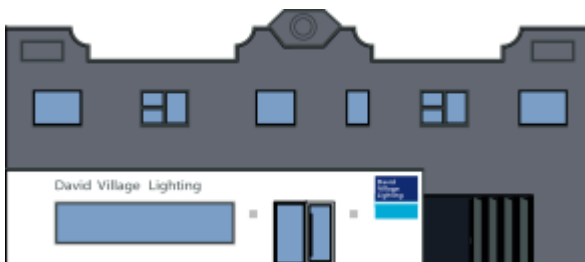
PRODUCT SPECIFICATION

Light Source: 1 x Max 9W E27 LED (Excluded)

IP Code: 20

Dimming: Dimmable via mains phase dimming.

Dimensions: Ø30cm
Height: 21.5cm
Cable Length: 200cm



For all sales and technical enquiries, please contact:

+44 (0)114 263 4266

info@davidvillagelighting.co.uk

www.davidvillagelighting.co.uk