



Established & Sons Filigrana Cluster Suspension

LA11258

SOURCE: <https://www.davidvillagelighting.co.uk/product/Established-Sons-Filigrana-Cluster-Suspension/10002409>



PRODUCT DESCRIPTION

Designer: Sebastian Wrong

Established and Sons Filigrana Cluster Suspension

The Filigrana Cluster is part of the [Filigrana Collection](#), created by British designer Sebastian Wrong. Wrong designed the Filigrana to evoke feelings of childhood and memories. Each pendant in the cluster features the distinctive candy-cane stripes that give the Filigrana its cheery aesthetic. The collection utilises a glass blowing technique from the 16th century, merging traditional methods with contemporary design. As each shade is mouth-blown, variations may occur from piece to piece, ensuring each pendant is truly unique.

The striped glass shape diffuses light into a warm and comfortable glow that surrounds the suspension, adding a cosy ambience to any room. Available in four fixed compositions, the Filigrana Cluster will fit a range of spaces. The impressive size of each suspension makes it well-suited to large rooms with high ceilings, such as a stairwell or entrance hall. In commercial spaces, the Filigrana Cluster adds a welcoming atmosphere to hospitality settings such as hotels, bars, and restaurants.

PRODUCT SPECIFICATION

Light Source: **C3a and C3b:** 3 x Max 15W E27 LED (Excluded)
C5: 5 x Max 15W E27 LED (Excluded)
C9: 9 x Max 15W E27 LED (Excluded)

IP Code: 20

Dimming: Dimmable via mains phase dimming.

Dimensions: **C3a:**

3 x S2 Cylinder: Ø20cm x H23cm
Total: Ø60cm
Total Height: 122cm

C3b:

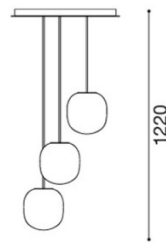
1 x S2 Cylinder: Ø20cm x H23cm
1 x S3 Ellipse: Ø37cm x H27cm
1 x S4 Ellipse: Ø45cm x H33cm
Total: Ø60cm
Total Height: 122cm

C5:

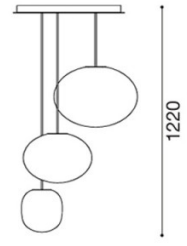
3 x S2 Cylinder: Ø20cm x H23cm
1 x S3 Ellipse: Ø37cm x H27cm
1 x S4 Ellipse: Ø45cm x H33cm
Total: Ø60cm
Total Height: 125cm

C9:

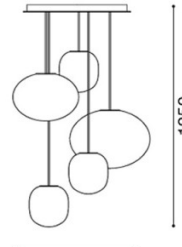
3 x S2 Cylinder: Ø20cm x H23cm
4 x Ellipse: Ø37cm x H27cm
2 x S4 Ellipse: Ø45cm x H33cm
Total: Ø100cm
Total Height: 121.5cm



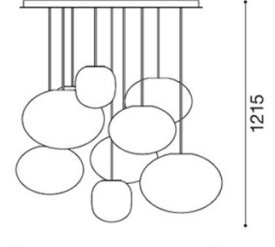
C3a: Ø600



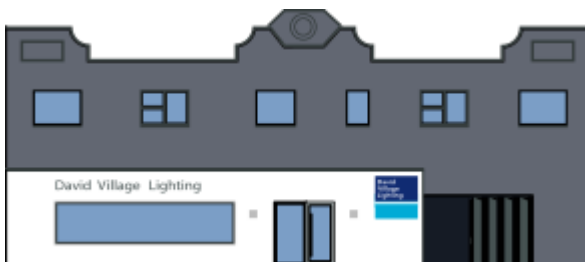
C3b: Ø600



C5: Ø600



C9: Ø1000



For all sales and technical enquiries, please contact:

+44 (0)114 263 4266

info@davidvillagelighting.co.uk

www.davidvillagelighting.co.uk