

FRITZ HANSEN

LA10445/P

Fritz Hansen Clam LED Portable Lamp

SOURCE: <https://www.davidvillagelighting.co.uk/product/Fritz-Hansen-Clam-LED-Portable-Lamp/10002271>

PRODUCT DESCRIPTION

Designer: Ahm & Lund

Fritz Hansen Clam LED Portable Lamp



The Fritz Hansen Clam Portable Table Lamp brings a new dimension of versatility to the Clam collection, blending refined aesthetics with practical functionality. Designed by Ahm & Lund, this portable version retains the distinctive seashell-inspired silhouette found in the collection's pendant, table, and floor lamps. The smooth matte surface conceals fingerprints and ensures easy maintenance, while the lamp's soft ambient glow creates a warm and inviting atmosphere. Its lightweight design makes it effortless to move between spaces, providing adaptable illumination wherever needed.

Engineered for convenience and modern living, the Clam Portable features an intuitive touch-sensitive dimming control with three brightness settings, allowing users to tailor the light to different moods and occasions. A built-in USB-C rechargeable battery provides up to 50 hours of illumination, making it ideal for both residential and hospitality settings. Whether placed in a cosy reading nook or used for intimate dining atmospheres, the lamp delivers both style and substance.

Available in three sophisticated monochrome finishes, White, Nine Grey, and Dusk Blue, the Clam Portable embodies the minimalist elegance of Scandinavian design. The IP44 rating ensures that while designed primarily for indoor use, the lamp can also be taken outside for temporary settings such as patios and terraces. The combination of durable polycarbonate construction, replaceable LED modules, and intuitive touch controls makes this an enduring and adaptable lighting solution.

PRODUCT SPECIFICATION

Light Source: 1.5W, 2700K, 126 Lumens

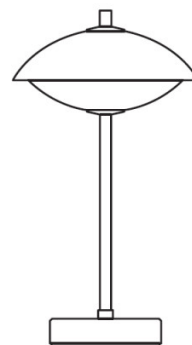
IP Code: 44

Dimming: Integrated dimmer on the product.

Dimensions: Height: 31cm
Shade: Ø17cm
Base: Ø10.2cm

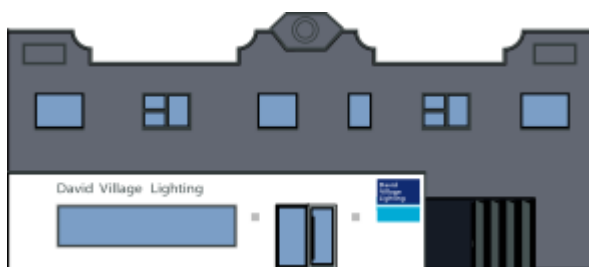
Charging Cable: 200cm

17 cm / 6.7"



31 cm / 12.2"

10,2 cm / 4"



For all sales and technical enquiries, please contact:

+44 (0)114 263 4266

info@davidvillagelighting.co.uk

www.davidvillagelighting.co.uk