

Tom Raffield

# Tom Raffield Skipper Pendant

LA11178

SOURCE: <https://www.davidvillagelighting.co.uk/product/Tom-Raffield-Skipper-Pendant/10002214>

## PRODUCT DESCRIPTION

**Designer:** Tom Raffield

### Tom Raffield Skipper Pendant

The Skipper Pendant by Tom Raffield is expertly handcrafted from his studio in Cornwall. Each shade comprises twenty made-to-measure pieces of timber that are steam-bent to form the iconic twists and bends showcased in this design. Tom Raffield, a world leader in the craft of steam-bending, utilises this method as it is low-energy and low-waste, aligning with his eco-friendly philosophy. The Skipper Pendant is available in a choice of sustainably sourced walnut, oak, or ash timber. Each finish is chosen for its durability, warm tones, and ability to be steam-bent into the desired shape.

The undulating loops of timber are synonymous with the [Skipper Collection](#). Enclosed within is the light source, casting pockets of light through gaps in the shade. This projects an intriguing play of light and shadows against the surrounding walls while filling the room with a cosy and warm atmosphere. The Skipper Pendant is available in two sizes. In smaller spaces, display a singular pendant above a bed or dining table to provide an elegant focal point. In larger rooms or commercial spaces with high ceilings, create a grand display using a cluster of pendants in each finish hanging at alternating heights to layer the light and add to the room's ambience.

**Please Note:** This pendant light is supplied with a brass socket and ceiling canopy with a black cable as standard. Other options are available, please [contact us](#) for more information and pricing.



## PRODUCT SPECIFICATION

**Light Source:** 1 x Max 25W E27 LED (Excluded)

**IP Code:** 20

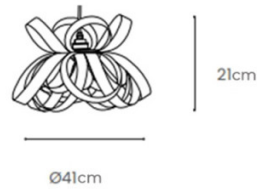
**Dimming:** Dimmable using trailing edge dimming.

**Dimensions: Small:**  
Ø41cm  
Height: 21cm

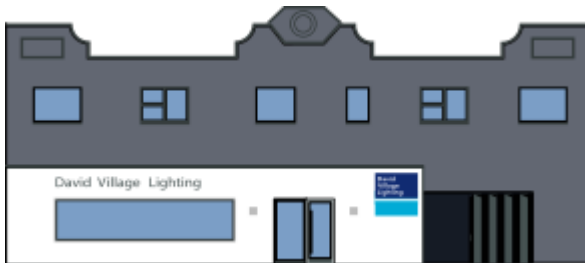
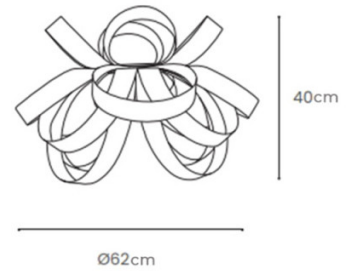
**Medium:**  
Ø62cm  
Height: 40cm

Cable Length: 200cm

Small



Medium



**For all sales and technical enquiries, please contact:**

+44 (0)114 263 4266

[info@davidvillagelighting.co.uk](mailto:info@davidvillagelighting.co.uk)

[www.davidvillagelighting.co.uk](http://www.davidvillagelighting.co.uk)