

Tom Raffield

LA11164

Tom Raffield Butterfly Pendant Giant

SOURCE: <https://www.davidvillagelighting.co.uk/product/Tom-Raffield-Butterfly-Pendant-Giant/10002192>

PRODUCT DESCRIPTION

Designer: Tom Raffield

Tom Raffield Butterfly Pendant Giant



Tom Raffield designed the Butterfly Pendant for his Cornish-based studio. Reminiscent of a butterfly in flight, the Butterfly is a seamless blend of energy and beauty. Tom Raffield created this piece using layered strips of wood in swooping curves, an effect achieved through steam-bending wood. Although seldom seen in large manufacturing processes, Tom Raffield is known for their steam-bent wooden pieces and uses this method to achieve the organic bends and curves that are synonymous with his brand. Sustainability is an important factor in everything they do. Steam-bending is a low-energy process that creates minimal wastage and allows for pieces to be made without the use of any nasty glues. Both oak and walnut finishes have been sustainably sourced, further reducing the brand's carbon footprint.

The large size of the Butterfly Pendant makes it well-suited for open-plan living spaces or used to create a remarkable first impression in an entrance hall. When illuminated, the wooden arcs create a captivating play of shadow and light that surrounds the pendant. The warm tones of the oak finish create a cosy and welcoming ambience, while the walnut finish looks great alongside both warm and cool-toned interiors, adding a rich glow to the room. Combining wood types and tones is an excellent option for creating dynamic spaces with depth. In commercial spaces, display the Butterfly beside a wooden-clad bar or wooden furniture to achieve this depth, along with a natural flow to the space.

Please Note: This pendant light is supplied with a satin nickel socket and ceiling canopy with a grey cable as standard. Other options are available, please [contact us](#) for more information and pricing.

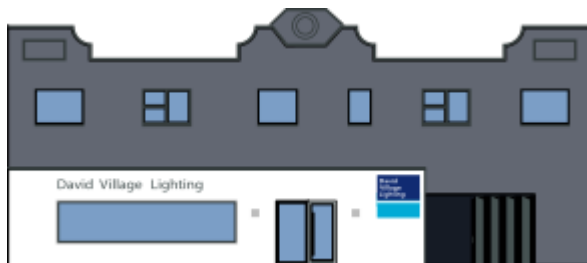
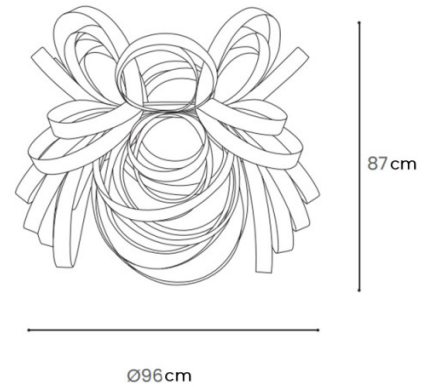
PRODUCT SPECIFICATION

Light Source: 1 x Max 25W E27 (Excluded)

IP Code: 20

Dimming: Dimmable using trailing edge dimming.

Dimensions: Ø96cm
Height: 87cm
Cable Length: 200cm



For all sales and technical enquiries, please contact:

+44 (0)114 263 4266

info@davidvillagelighting.co.uk

www.davidvillagelighting.co.uk