

**Tom
Dixon.**

LA11144

Tom Dixon Melt LED Outdoor Lamp

SOURCE: <https://www.davidvillagelighting.co.uk/product/Tom-Dixon-Melt-LED-Outdoor-Lamp/10002142>

PRODUCT DESCRIPTION

Designer: Tom Dixon

Tom Dixon Melt LED Outdoor Lamp

The Tom Dixon Outdoor Melt introduces a new fitting to the series making the highly popular collection suitable for outdoor use. Each shade includes a tripod base and an easy-to-use hanging strap, giving you freedom of choice on how to display this iconic piece. The rechargeable battery provides the flexibility of cable-free lighting while keeping the lamp free from any unnecessary clutter. Once charged, the Outdoor Melt Lamp provides up to eight hours of light, depending on light intensity. The integrated dimmer offers a three-step dimming process to personalise the lighting output depending on the ambience required. Its IP rating of 44 means it is splash-proof and suitable for both outdoor and indoor use.

Each shade is blow-moulded into a beautifully distorted, organic-looking form that is captivating both when switched on or off. When illuminated, the natural distortions in the shade create a play of light and shadows as light is diffused from within. This captivating glow makes the Outdoor Melt a stunning display while creating a welcoming atmosphere in any setting. Perfect for complimenting an outdoor patio, illuminating a poolside, or hanging above a garden table. If used indoors, the portable nature of the product makes it easy to move, adding a warm ambience to bedrooms, living rooms, or hallways.

In celebration of the Melt's tenth anniversary, Tom Dixon has released a bronze variant of the Melt Outdoor. This new finish features more muted tones, designed to suit a wide range of settings while adding a touch of sophistication to any space.

Please Note: Each Tom Dixon Melt Outdoor includes one blow-moulded shade, one floor stand, and one strap for hanging.



PRODUCT SPECIFICATION

Light Source: 4.5W, 3000K, 500 Lumens.

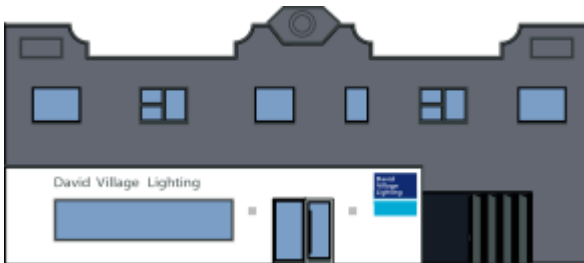
IP Code: 44

Dimming: Integrated dimmer on the product.

Dimensions: Pendant:
Ø50cm
Height: 95-250cm

Floor:
Ø50cm
Height: 57cm

Charging Cable Length: 200cm



For all sales and technical enquiries, please contact:

+44 (0)114 263 4266

info@davidvillagelighting.co.uk

www.davidvillagelighting.co.uk