

CTO LIGHTING

CTO Lighting Torres Wall Light

LA11135/WL

SOURCE: <https://www.davidvillagelighting.co.uk/product/CTO-Lighting-Torres-Wall-Light/10002134>

PRODUCT DESCRIPTION

Designer: CTO Lighting

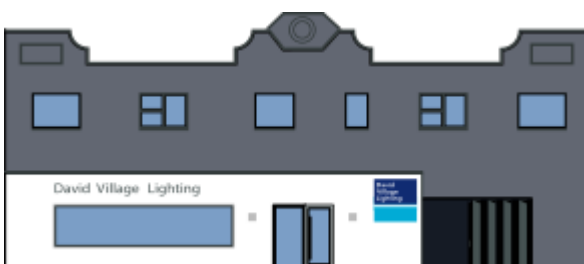
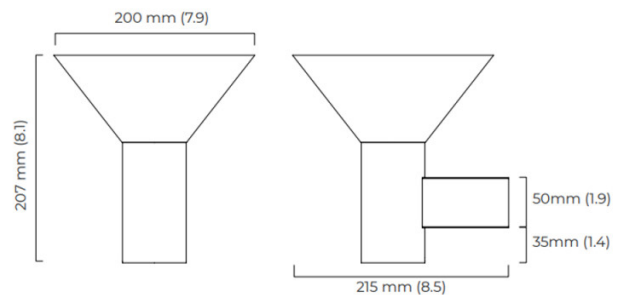
CTO Lighting Torres Wall Light

Inspired by the strength and stability of ancient towers, the CTO Lighting Torres Wall Light brings sculptural elegance to any interior. The perfectly proportioned conical shade provides upward illumination, ideal for highlighting ceilings or creating ambient lighting in living rooms, hallways, or bedrooms. Handcrafted in the UK, the metalwork showcases expert craftsmanship, available in finishes such as bronze, polished nickel, or bronze with a honed alabaster shade.

Designed with functionality in mind, the Torres Wall Light With the option of an IP44 rating, making it suitable for bathrooms and wetrooms. The alabaster finish diffuses light for a soft glow, while the polished metal shades offer a more architectural statement. Pair this wall light with other pieces from the Torres collection for a cohesive and sophisticated lighting scheme.

PRODUCT SPECIFICATION

- Light Source:** 1 x Max 2.3W LED G9 (Excluded)
- IP Code:** 20/ 44
- Dimming:** Dimmable using trailing edge dimming / Dimmable via Dali dimming systems. Please consult your electrician, additional wiring may be required on site. (Dimmable bulb required)
- Dimensions:** Shade: Ø20cm
Depth: 21.5cm
Height: 20.7cm



For all sales and technical enquiries, please contact:

+44 (0)114 263 4266

info@davidvillagelighting.co.uk

www.davidvillagelighting.co.uk