



LA5105/S

## Slamp Clizia Mama Non Mama Suspension

SOURCE: <https://www.davidvillagelighting.co.uk/product/Slamp-Clizia-Mama-Non-Mama-Suspension/10002014>

### PRODUCT DESCRIPTION

**Designer:** Adriano Rachele

### Slamp Clizia Mama Non Mama Suspension

The Slamp Clizia Mama Non Mama Suspension light, designed by Adriano Rachele, is a celebration of joy, femininity, and pure emotion. Each lamp is meticulously hand-folded through an interlocking system, creating an elegant floral form that brings warmth and softness to any space. The delicate petals, made from Slamp's innovative technopolymers, cast captivating plays of light and shadow throughout the room.

Available in three luxurious finishes, gold, white, and black, the Clizia Mama Non Mama offers a refined touch to any interior. The finish adds texture and brilliance, while the translucent Cristalflex® creates a glowing effect that radiates warmth. Perfect for mood lighting, the Clizia range is ideal for both intimate residential settings and grand installations in commercial spaces.

The Gold and White products come with a transparent cable as default and the Black comes with a black cable, but we do offer the option of a red cable for the Gold / White products and a Transparent cable for the Black product.

**Also available in a larger size (Ø130cm), please contact us for further information and pricing.**

### PRODUCT SPECIFICATION

**Light Source:** **Small:** 2 x Max 12W LED E27 Filament Bulbs (Excluded)  
**Large:** 4 x Max 12W LED E27 Filament Bulbs (Excluded)

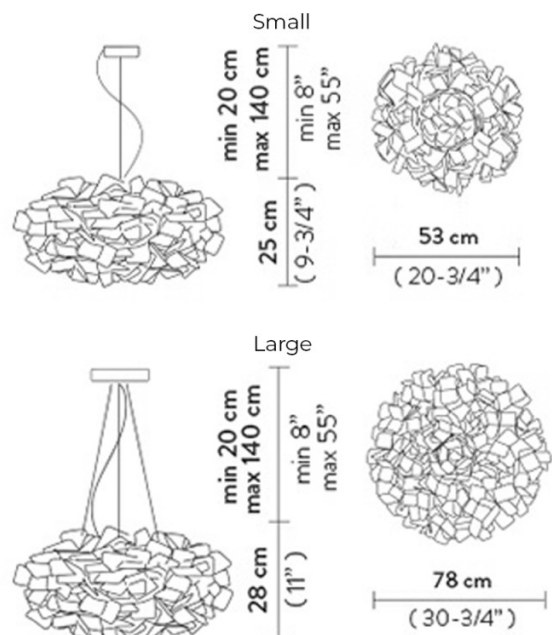
**IP Code:** 20

**Dimming:** Dimmable via mains phase dimming.

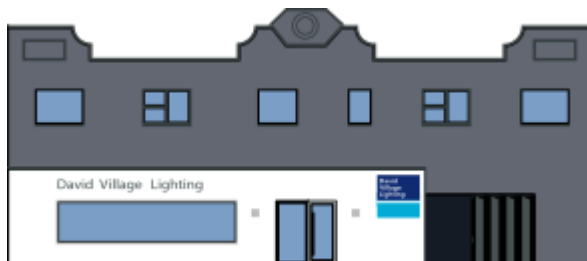
**Dimensions: Small:**  
Width: Ø53cm  
Height: 25cm

**Large:**  
Width: Ø78cm  
Height: 28cm

**Cable length:** 20cm - 140cm







**For all sales and technical enquiries, please contact:**

+44 (0)114 263 4266

[info@davidvillagelighting.co.uk](mailto:info@davidvillagelighting.co.uk)

[www.davidvillagelighting.co.uk](http://www.davidvillagelighting.co.uk)