

louis poulsen

LA10906/3/3/SALE

Louis Poulsen PH 3/3 Whole Numbers Pendant CLEARANCE

SOURCE: <https://www.davidvillagelighting.co.uk/product/Louis-Poulsen-PH-33-Whole-Numbers-Pendant-CLEARANCE/10001892>

PRODUCT DESCRIPTION

Designer: Poul Henningsen

Louis Poulsen PH 3/3 Whole Numbers Pendant

BRAND NEW, OVERSTOCKED, ORIGINAL PACKAGING.
1 x Metal/Opal Glass Available.

Louis Poulsen PH 3/3 Whole Numbers Pendant was designed by the infamous, Poul Henningson. The shade is a three-tier system which consists of white mouth-blown opaline glass and/or soft-touch painted spun aluminium. The aluminium shades have a black exterior and a white interior, creating a monochrome effect. The opal glass shade creates a warm glow around the pendant and the metal shade has a direct downward light. The combined metal and opal shade provides both effects in one pendant. All materials create a glare-free and comfortable light for both residential and commercial settings. Included is a diffuser in frosted glass which can be inserted in the bottom of the pendant for an even softer light distribution.

Louis Poulsen PH 3/3 Whole Numbers Pendants are far rounder and more compact to look at compared to the **'hybrid'** sizes and are recommended to be mounted in a high-ceiling room. They can be featured in a lounge or kitchen above a dining table or a cluster above an island. Louis Poulsen PH 3/3 Whole Numbers Pendant is a classical shade that is also available in a larger size: [PH 5/5 pendant](#).

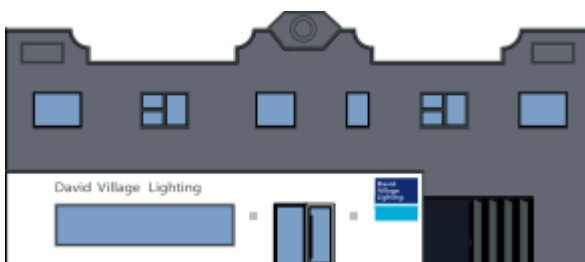
PRODUCT SPECIFICATION

Light Source: 1 x Max 10W E27 LED (Excluded)

IP Code: 20

Dimming: Dimmable via mains phase dimming.

Dimensions: Shade: Ø28.5cm
Height: 30cm
Cable length: 400cm



For all sales and technical enquiries, please contact:

+44 (0)114 263 4266

info@davidvillagelighting.co.uk

www.davidvillagelighting.co.uk