

NEMO

## Nemo Lighting Lorosae Pendant

LA10950

SOURCE: <https://www.davidvillagelighting.co.uk/product/Nemo-Lighting-Lorosae-Pendant/10001580>



### PRODUCT DESCRIPTION

**Designer:** Alvaro Siza

### Nemo Lighting Lorosae Pendant

Originally designed by Alvaro Siza in 1999 for a solo exhibition, the Nemo Lighting Lorosae Pendant features a sleek translucent glass shade that is available in 5 glossy colours - the design utilises a white interior shade to preserve the natural colour of the light source and optimises the output.

The shade of the Nemo Lighting Lorosae Pendant boasts a classic silhouette that produces a functional downlight. Each pendant can be displayed individually or in rows or clusters for larger areas. Lorosae is a beautiful addition above dining tables, coffee tables and even bedside tables, the range of colour options ensures it can adapt to a wide range of interiors in the residential and commercial sectors.

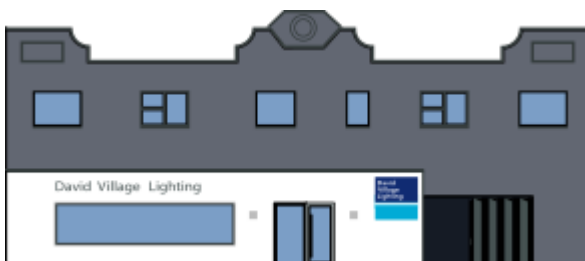
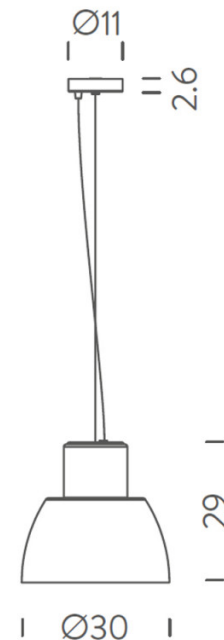
### PRODUCT SPECIFICATION

**Light Source:** 1 x Max 100W E27 LED (excluded)

**IP Code:** 20

**Dimming:** Dimmable via mains phase dimming.

**Dimensions:** Ø30cm  
Shade Height: 29cm  
Drop Height: 250cm  
Ceiling Canopy: Ø11cm



**For all sales and technical enquiries, please contact:**

+44 (0)114 263 4266

[info@davidvillagelighting.co.uk](mailto:info@davidvillagelighting.co.uk)

[www.davidvillagelighting.co.uk](http://www.davidvillagelighting.co.uk)