

KARMAN

LA10944

Karman Gonzaga LED Suspension

SOURCE: <https://www.davidvillagelighting.co.uk/product/Karman-Gonzaga-LED-Suspension/10001562>



PRODUCT DESCRIPTION

Designer: Matteo Ugolini

Karman Gonzaga LED Suspension

An innovative lighting solution, Karman presents its collaboration with designer Matteo Ugolini, the Gonzaga Suspension. This lamp was inspired by rough-coloured patterns and experiments with textures and shapes. The Gonzaga consists of a pleated circular aluminium body, fitted with a blown glass diffuser. Thanks to this diffuser along with the aluminium structure acting as a reflector, the Karman Gonzaga Suspension produces an ambient direct downlight perfect for dining spaces. Utilise this modern lighting solution in dining rooms, living rooms, entryways and kitchens.

Gonzaga can be used throughout your interior, and thanks to the IP65 rating can also be utilised in bathrooms or outdoor spaces safely. This unique contemporary lighting solution by Karman can adapt to a range of modern spaces, available in three metallic finishes and two sizes. Display the pendants individually or in linear rows or clusters, combining multiple shapes and colours.

PRODUCT SPECIFICATION

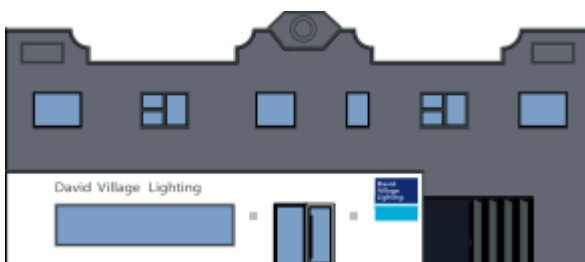
Light Source: 13W, 2700K, 1200 Lumens

IP Code: 65

Dimming: Dimmable via mains phase dimming.

Dimensions: Small:
Ø42cm
Shade Height: 8cm
Ceiling Canopy: Ø12cm
Cable Length: 200cm

Large:
Ø59cm
Shade Height: 8cm
Ceiling Canopy: Ø12cm
Cable Length: 200cm



For all sales and technical enquiries, please contact:

+44 (0)114 263 4266

info@davidvillagelighting.co.uk

www.davidvillagelighting.co.uk