



LA10938/S

Artemide Architectural Tagora LED Suspension Light

SOURCE: <https://www.davidvillagelighting.co.uk/product/Artemide-Architectural-Tagora-LED-Suspension-Light/10001492>



PRODUCT DESCRIPTION

Designer: S.R. Cornelissen

Artemide Architectural Tagora LED Suspension

S.R. Cornelissen designed the Artemide Architectural Tagora Suspension which provides a functional downlight, making it perfect for above counters, kitchen islands, dining tables and stairwells. The sleek aluminium body is available in a range of different two-toned finishes: black/orange, black/green, black/blue, beige/white or grey/white. It also grants you the choice between four sizes.

The Tagora 80 and 270 offer a high-output spotlight with aluminium optics, whilst the Tagora 270 uses a proprietary system based on a hybrid combined lens and reflector optic and the Tagora 570 and 970 come with a PMMA diffuser, offering a comfortable diffused light. The steel suspension cables of the Tagora allow for quick adjustment, offering an initial 2-metre drop height, you can also choose between dimmable or non-dimmable options, depending on the version.

PRODUCT SPECIFICATION

Light Source: **Tagora 80:** 14W, 3000K, 1027 Lumens
Tagora 270: 34W, 3000K, 1926 Lumens
Tagora 570: 54W, 3000K, 3319 Lumens
Tagora 970: 95W, 3000K, 6947 Lumens

IP Code: 20

Dimming: Dimmable via Dali dimming systems. Please consult your electrician, additional wiring may be required.

Dimensions: **Tagora 80:**
Ø8cm
Shade Height: 33cm
Ceiling Canopy: Ø10cm

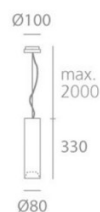
Tagora 270:
Ø27cm
Shade Height: 33cm
Ceiling Canopy: Ø18cm

Tagora 570:
Ø57cm
Shade Height: 19cm
Ceiling Canopy: Ø18cm

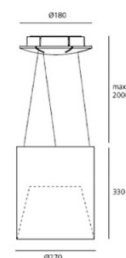
Tagora 970:
Ø97cm
Shade Height: 23cm
Ceiling Canopy: Ø18cm

Drop Height: 200cm

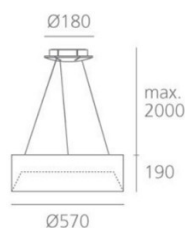
Tagora 80:



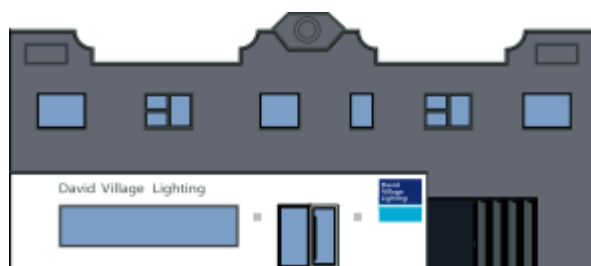
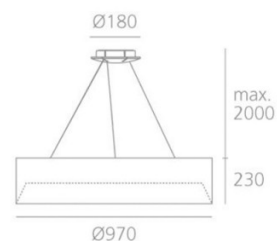
Tagora 270:



Tagora 570:



Tagora 970:



For all sales and technical enquiries, please contact:

+44 (0)114 263 4266

info@davidvillagelighting.co.uk

www.davidvillagelighting.co.uk