

VIBIA

Vibia Array Conical LED Pendant

LA10931/C

SOURCE: <https://www.davidvillagelighting.co.uk/product/Vibia-Array-Conical-LED-Pendant/10001474>

PRODUCT DESCRIPTION

Designer: Umut Yamac

Vibia Array Conical Pendant

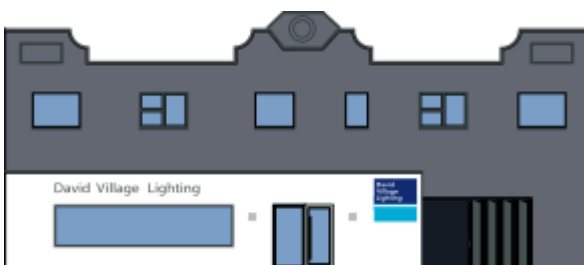
Designed by Umut Yamac, the Vibia Array Conical Pendants explore the concept of tension in lighting, specifically regarding softer materials. The structure utilises fine thread that is pulled taut between metal rings, these rings house a warm LED light source that shines upwards through the material and downwards for a more focused illumination. The result is an even dispersion of light and a beautiful sculptural feature in your space. The Vibia Array is available in a wide collection of sizes, allowing it to adapt to almost any contemporary interior and granting the ability to be displayed individually or in groups. Each size is also available in three colours: Beige, Terra Red or Green.

Using a fine thread for the shade allows the Vibia Array Pendant to make a statement in your interior without overwhelming the space. Suitable for residential homes or larger commercial interiors, the Array pendants are highly versatile and offer numerous configuration options. Utilise these lamps in your living room, dining space, entryway, kitchen or in areas in the hospitality industry.



PRODUCT SPECIFICATION

- Light Source:** 33W-746W, 2700K, 3993-9196 Lumens
- IP Code:** 20
- Dimming:** Dimmable via 1-10v dimming systems. Please consult your electrician, additional wiring may be required on site.
- Dimensions:** Multiple options are available, contact us for more information.



For all sales and technical enquiries, please contact:

+44 (0)114 263 4266

info@davidvillagelighting.co.uk

www.davidvillagelighting.co.uk