

**NEMO**

**Nemo Lighting Crown Wall Light**

LA10087/W

SOURCE: <https://www.davidvillagelighting.co.uk/product/Nemo-Lighting-Crown-Wall-Light/10001348>

**PRODUCT DESCRIPTION**

Designer: Jehs+Laub

**Nemo Lighting Crown Wall Light**

Nemo Lighting Crown Wall Light is designed by Jehs + Laub. The **Crown collection** draws inspiration in the form of a snowflake with its versatile and unique design structure. The Crown Wall Light looks idyllic and contemporary in any setting.

Crown Wall Light is available with either 2 LED halos or 4 LED halos and in a variety of colours. The structure of the wall light is made from die-casted aluminium whilst the light source is made from satin, sandblasted glass. The wall light from the Crown family has a height of 16cm and looks visually pleasing in hallways and atriums.



**PRODUCT SPECIFICATION**

**Light Source: 2x Halo**  
2x 60W, G9 QT-14 (Excluded)

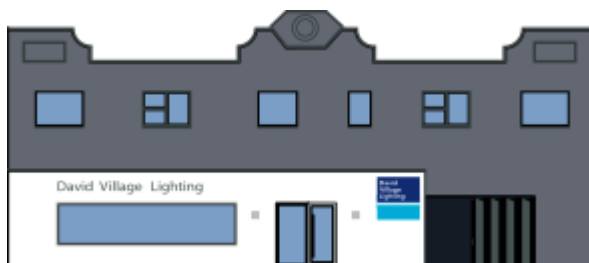
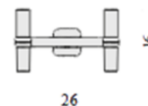
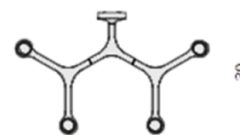
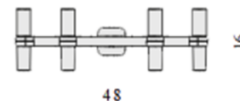
**4x Halo**  
4x 60W, G9 QT-14 (Excluded)

**IP Code:** 20

**Dimming:** Dimmable via mains phase dimming

**Dimensions: 2x Halo**  
Width: 26cm  
Height: 16cm  
Depth: 18cm

**4x Halo**  
Width: 48cm  
Height: 16cm  
Depth: 30cm



**For all sales and technical enquiries, please contact:**

+44 (0)114 263 4266

info@davidvillagelighting.co.uk

www.davidvillagelighting.co.uk