

NEW WORKS.

## New Works Margin Pendant

LA10861

SOURCE: <https://www.davidvillagelighting.co.uk/product/New-Works-Margin-Pendant/10001295>



### PRODUCT DESCRIPTION

**Designer:** John Astbury

### New Works Margin Pendant

The New Works Margin Pendant was designed by John Astbury and is a modern interpretation of a classic luminaire style. The Margin Pendant utilises a textile beige shade, suspended from a simple black fabric cable, and thanks to the tiered design of the shade the light source is gently diffused, resulting in a warm and inviting illumination. This makes the New Works Margin Pendant perfect for areas in your space where relaxation is key.

A contemporary take on Scandinavian design, this lighting solution boasts a clean silhouette and is available in three varying sizes. Margin can easily adapt to a wide range of interiors, but reaches its full potential when displayed in living areas, dining spaces, bedrooms and hallways. Whether displayed individually or in a cluster of varying sizes, this modern chandelier creates a unique character through its dynamic use of contrasting materials.

### PRODUCT SPECIFICATION

**Light Source:** 3 x Max 11W E27 LED (excluded)

**IP Code:** 20

**Dimming:** Dimmable via mains phase dimming.

**Dimensions:** **Small:**  
Ø48cm  
Shade Height: 49cm

**Medium:**  
Ø68cm  
Shade Height: 63.5cm

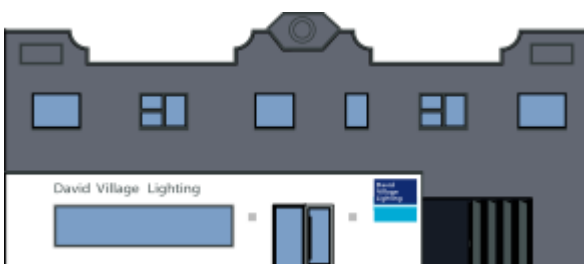
**Large:**  
Ø88cm  
Shade Height: 79cm

Cable Length: 350cm  
Ceiling Canopy: Ø14cm

Small:

Medium:

Large:



**For all sales and technical enquiries, please contact:**

+44 (0)114 263 4266

[info@davidvillagelighting.co.uk](mailto:info@davidvillagelighting.co.uk)

[www.davidvillagelighting.co.uk](http://www.davidvillagelighting.co.uk)