

**Tom
Dixon.**

LA10849

Tom Dixon Melt Fat Cone LED Floor Lamp

SOURCE: <https://www.davidvillagelighting.co.uk/product/Tom-Dixon-Melt-Fat-Cone-LED-Floor-Lamp/10001267>

PRODUCT DESCRIPTION

Designer: Tom Dixon

Tom Dixon Melt Fat Cone LED Floor Lamp



A unique addition to the [Tom Dixon Melt Collection](#), the Melt Fat Cone Floor Lamp features the iconic shade that resembles molten glass and produces a mesmerising lighting effect. When turned off, the asymmetric shade appears opaque but then, once illuminated, reflects the light to produce a glowing, melting effect. The Melt is crafted through a process of blow moulding and vacuum metallisation to achieve the melted orb, which in this instance sits atop a cone-shaped steel base and creates a striking silhouette, similar to that of the [Tom Dixon Melt Portable](#) - but on a larger scale.

In 2024 Tom Dixon introduced a new addition to the Fat Cone Floor Lamp - an opal shade. This shade does not utilise the famous vacuum metallisation process, but instead, the opal melt transforms into a glowing orb, providing enhanced luminosity. When switched off, the Opal shade is opaque, like a pearl.

Tom Dixon has released a bronze finish of the Melt Floor Lamp in celebration of the Melt's ten year anniversary. This new variant features rich tones, reminiscent of melted chocolate. When illuminated, light seems to warp and transform from within, creating a captivating play of light.

Available in a range of finishes the Tom Dixon Melt Fat Cone LED Floor Lamp is a gorgeous addition to living rooms, bedrooms, hallways and entryways. It can also be utilised in commercial settings, especially in the hospitality industry, adding a modern charm to hotels, restaurants and bars.

PRODUCT SPECIFICATION

Light Source: 6W, 3000K, 800 Lumens

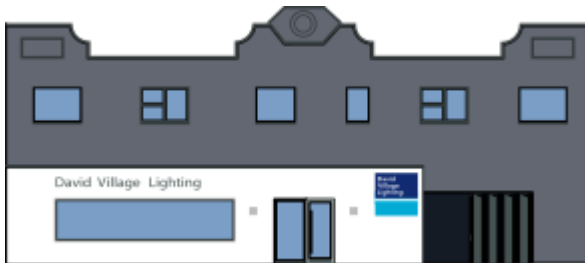
IP Code: 20

Dimming: In-line dimmer included on cable.

Dimensions: Ø50cm
Height: 174.5 cm
Cable Length: 250cm

174.5cm

50cm



For all sales and technical enquiries, please contact:

+44 (0)114 263 4266

info@davidvillagelighting.co.uk

www.davidvillagelighting.co.uk