

a-emotional light

## a-emotional light Fluo Pendant

LA10847

SOURCE: <https://www.davidvillagelighting.co.uk/product/a-emotional-light-Fluo-Pendant/10001264>



### PRODUCT DESCRIPTION

**Designer:** Arturo Alvarez

### a-emotional light Fluo Pendant

a-emotional light's Fluo lamp is designed by Spanish designer Arturo Alvarez. It is manufactured using painted galvanized steel mesh, which gracefully joins around a central point of light, creating an illusion of a vaporous fabric that is semi-transparent. This design plays with the observer's intuition, revealing and concealing at the same time. The shade diffuses light as it seeps through, projecting patterns onto surrounding walls. The handmade design, which won a Good Design Award in 2009, is particularly striking in larger compositions.

The Fluo Pendant is a versatile product that can be used in any project, whether minimalist or spectacular. It is suitable for placement in homes, hotels, restaurants, or offices and is available in three sizes, making them adaptable for the space and décor they are installed in.

### PRODUCT SPECIFICATION

**Light Source:** 1 x Max 12W E27 LED (excluded)

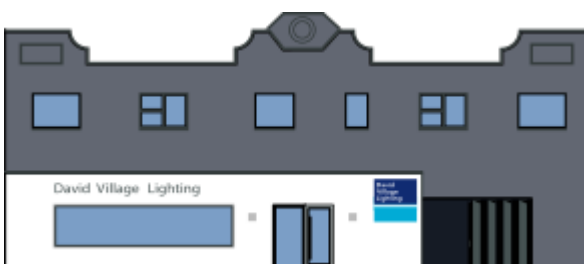
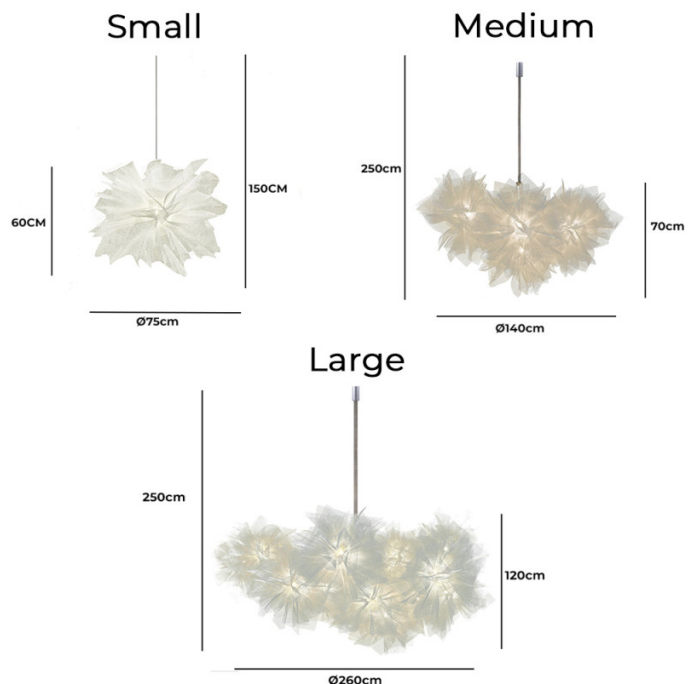
**IP Code:** 20

**Dimming:** Dimmable by mains phase dimming.

**Dimensions:** **Small:**  
Ø75cm  
Height: 60cm  
Cable Length: 150cm

**Medium:**  
Ø140cm  
Height: 70cm  
Cable Length: 250cm

**Large:**  
Ø260cm  
Height: 120cm  
Cable Length: 250cm



**For all sales and technical enquiries, please contact:**

+44 (0)114 263 4266

[info@davidvillagelighting.co.uk](mailto:info@davidvillagelighting.co.uk)

[www.davidvillagelighting.co.uk](http://www.davidvillagelighting.co.uk)