

a-emotional light

LA10840/104

## a-emotional light Ura 104 Pendant

SOURCE: <https://www.davidvillagelighting.co.uk/product/a-emotional-light-Ura-104-Pendant/10001241>



### PRODUCT DESCRIPTION

**Designer:** Arturo Alvarez

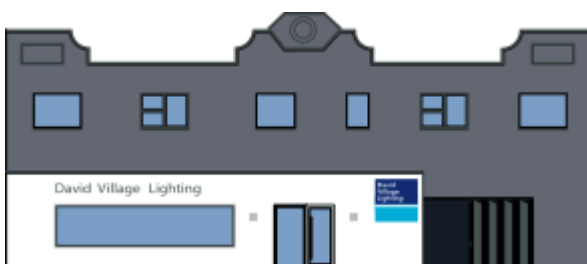
### a-emotional light Ura 104 Pendant

The Ura 104 pendant by a-emotional light has a distinctive shape which has been created by folding techniques applied during the handcrafting process. The shades are made from painted stainless steel mesh and are suspended from the ceiling by a 150cm cable. The intricate folds of the shade allow light to permeate through while also creating a visually stunning pattern that will adorn your wall.

Lighting design company, a-emotional light, create designs that are original and always carefully hand-crafted by experts. Spanish designer Arturo Alvarez drew inspiration from nature while exploring simple geometric patterns to create [The Ura Collection](#). This collection includes three pendants, a floor lamp, and a table lamp. The Ura pendants can be hung together in a group or individually in any residential or commercial setting.

### PRODUCT SPECIFICATION

**Light Source:** 1 x Max 17W E27 LED (Excluded)  
**IP Code:** 20  
**Dimming:** Dimmable via mains phase dimming.  
**Dimensions:** Ø50cm  
 Height: 28cm  
 Cable Length: 150cm



**For all sales and technical enquiries, please contact:**

+44 (0)114 263 4266

[info@davidvillagelighting.co.uk](mailto:info@davidvillagelighting.co.uk)

[www.davidvillagelighting.co.uk](http://www.davidvillagelighting.co.uk)