

**louis poulsen**

**LA10831**

## Louis Poulsen Panthella 250 LED Portable

SOURCE: <https://www.davidvillagelighting.co.uk/product/Louis-Poulsen-Panthella-250-LED-Portable/10001228>

### PRODUCT DESCRIPTION

**Designer:** Verner Panton

### Louis Poulsen Panthella 250 LED Portable Lamp

The original Panthella Table Lamp was designed by Verner Panton in 1971 and is now available in a portable version. The [Panthella Collection](#) is recognized as one of Verner Panton's most important and iconic designs. The Panthella Portable Lamp is a curved, geometric mushroom silhouette which casts light downwards onto the trumpet-shaped base which is then reflected outwards. This lamp would be ideal for creating a warm ambient atmosphere.

This Panthella 250 Portable Lamp has a total battery life of 45 hours on the lowest setting, 18 hours on the middle setting and 4.5 hours on the highest setting. With an IP rating of 44, this lamp can now be positioned outside in the evening to create a relaxing environment.

### PRODUCT SPECIFICATION

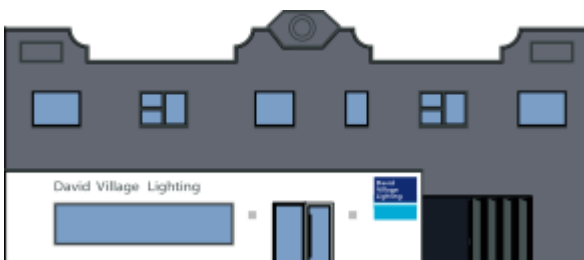
**Light Source:** 6W, 2700K, 456 Lumens

**IP Code:** 44

**Dimming:** Integrated dimmer on the product.

**Dimensions:** Height: 34.6cm  
Shade: Ø25cm  
Base: Ø15.6cm

Cable Length: 150cm



**For all sales and technical enquiries, please contact:**

+44 (0)114 263 4266

[info@davidvillagelighting.co.uk](mailto:info@davidvillagelighting.co.uk)

[www.davidvillagelighting.co.uk](http://www.davidvillagelighting.co.uk)