

**CLEARANCE
OFFERS**

LA10601/CLEARANCE

LYFA Ninotchka Pendant Light CLEARANCE EX-DISPLAY

SOURCE: <https://www.davidvillagelighting.co.uk/product/LYFA-Ninotchka-Pendant-Light-CLEARANCE-EX-DISPLAY/10001217>



PRODUCT DESCRIPTION

Designer: Bent Karlby

LYFA Ninotchka Pendant Light

Ex-Display, very good condition.

See images for reference.

1 x Black Available.

The Ninotchka pendant light by LYFA still maintains the original style and finish. The steel shade with a white interior features an asymmetrical design that can be viewed from multiple angles to fully enjoy the retro style. Designed by Bent Karlby after being inspired by an unlikely source. The design came about when Karlby took note of an eye-catching hat worn by the Swedish Hollywood star Greta Garbo in her 1939 film, Ninotchka. By taking his inspiration from fashion and pop culture in the 1930s, the design encapsulates the trends and styles of the time.

The LYFA Ninotchka pendant brings both direct and indirect light to a space. The direct downward light coming from the bottom of the uniquely shaped shade is ideal for placement over dining tables and living spaces. With the accompaniment of the diffused upward light, this pendant creates a bright and calming overall atmosphere within a room.

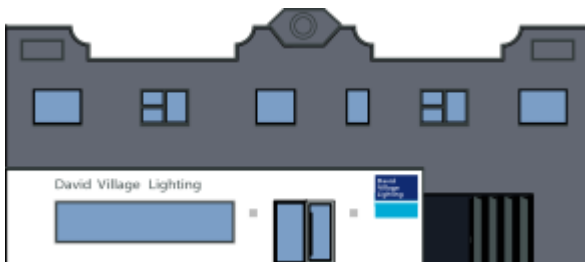
PRODUCT SPECIFICATION

Light Source: 1 x Max 60W E27 (excluded)

IP Code: 20

Dimming: Dimmable via mains phase dimming.

Dimensions: Ø27.5cm
Shade Height: 49.4cm
Width: 23.9cm
Cable Length: 300cm



For all sales and technical enquiries, please contact:

+44 (0)114 263 4266

info@davidvillagelighting.co.uk

www.davidvillagelighting.co.uk