



Tom Dixon Puff Pendant

LA10811

SOURCE: <https://www.davidvillagelighting.co.uk/product/Tom-Dixon-Puff-Pendant/10001114>

PRODUCT DESCRIPTION

Designer: Tom Dixon

Tom Dixon Puff Pendant

The Tom Dixon Puff Pendant was inspired by inflatable geometry and boasts an intricately playful shade that is suspended by a black fabric cable. The shade is crafted from flat diamond-shaped metal panels, expanded and ballooned as though they have been inflated - Puff also includes a removable metal panel to ensure you can easily access the light source for repairs. The etched and perforated panels of the Puff Pendant create small but highly reflective facets that disperse internal reflections, making the inside resemble a shimmering inverted disco ball.

This pendant is a beautiful example of combining art and design, Puff can add elegance to almost any interior whilst providing ambient lighting to your space. Display the Puff Pendant in living areas, hallways and even kitchens in residential spaces. Similarly, this lighting solution can expertly illuminate commercial interiors, including restaurants, bars and hotels.

The Tom Dixon Puff Pendant is also available as a three-piece or five-piece cluster. Please [contact us](#) for more information and pricing.



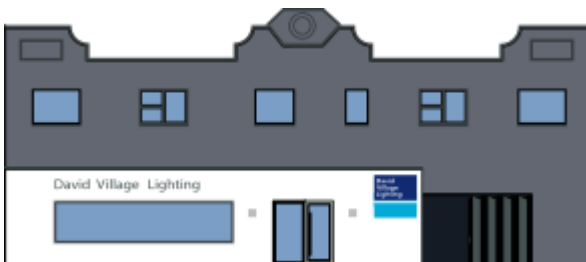
PRODUCT SPECIFICATION

Light Source: 1 x Max 15W E27 LED (excluded)

IP Code: 20

Dimming: Dimmable via mains phase dimming.

Dimensions: Shade Height: 42.5cm
Shade Width: 45cm
Cable Length: 250cm



For all sales and technical enquiries, please contact:

+44 (0)114 263 4266

info@davidvillagelighting.co.uk

www.davidvillagelighting.co.uk