

pholc

## Pholc Kandinsky LED Pendant

LA10745/P

SOURCE: <https://www.davidvillagelighting.co.uk/product/Pholc-Kandinsky-LED-Pendant/10000939>



### PRODUCT DESCRIPTION

**Designer:** Broberg & Ridderstråle

### Pholc Kandinsky Pendant

Combining fragility and precision, the Kandinsky Pendant by [Pholc](#) casts a soft glow wherever it is situated. Inspired by the abstract circle paintings of its namesake; Wassily Kandinsky, the hand-blown glass pendant evokes drama in its setting, all whilst remaining delicate with a sense of weightlessness. Designed by Stockholm-based collaborators Broberg & Ridderstråle, Kandinsky was awarded Lamp of the Year by Residence Magazine 2019.

The brass spear that strikes through the glass sphere emits a diffused light that can be dimmed to suit any mood. The pendant can be heightened or lowered to fit the ambience. Whether it be over a dining table, as a design feature on its own or as a group, the fixture is adaptable to your home or professional setting.

### PRODUCT SPECIFICATION

**Light Source:** **Small:** 5W, 2700K, 535 Lumens

**Large:** 7W, 2700K, 840 Lumens

**IP Code:** 20

**Dimming:** Dimmable using leading edge and trailing edge.

**Dimensions:** **Small:**

Ø30cm

Structure Height: 81.2cm

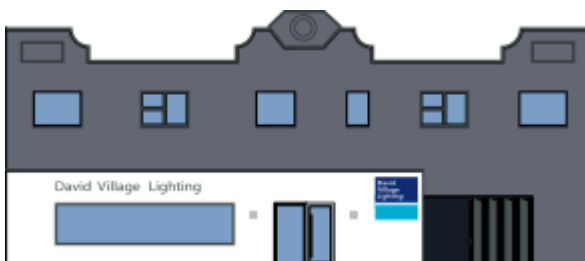
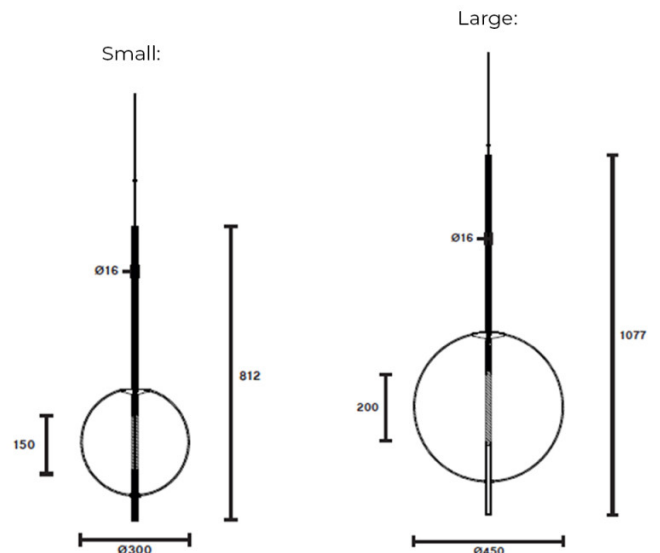
Max Cable Length: 300cm

**Large:**

Ø45cm

Structure Height: 107.7cm

Max Cable Length: 300cm



**For all sales and technical enquiries, please contact:**

+44 (0)114 263 4266

[info@davidvillagelighting.co.uk](mailto:info@davidvillagelighting.co.uk)

[www.davidvillagelighting.co.uk](http://www.davidvillagelighting.co.uk)